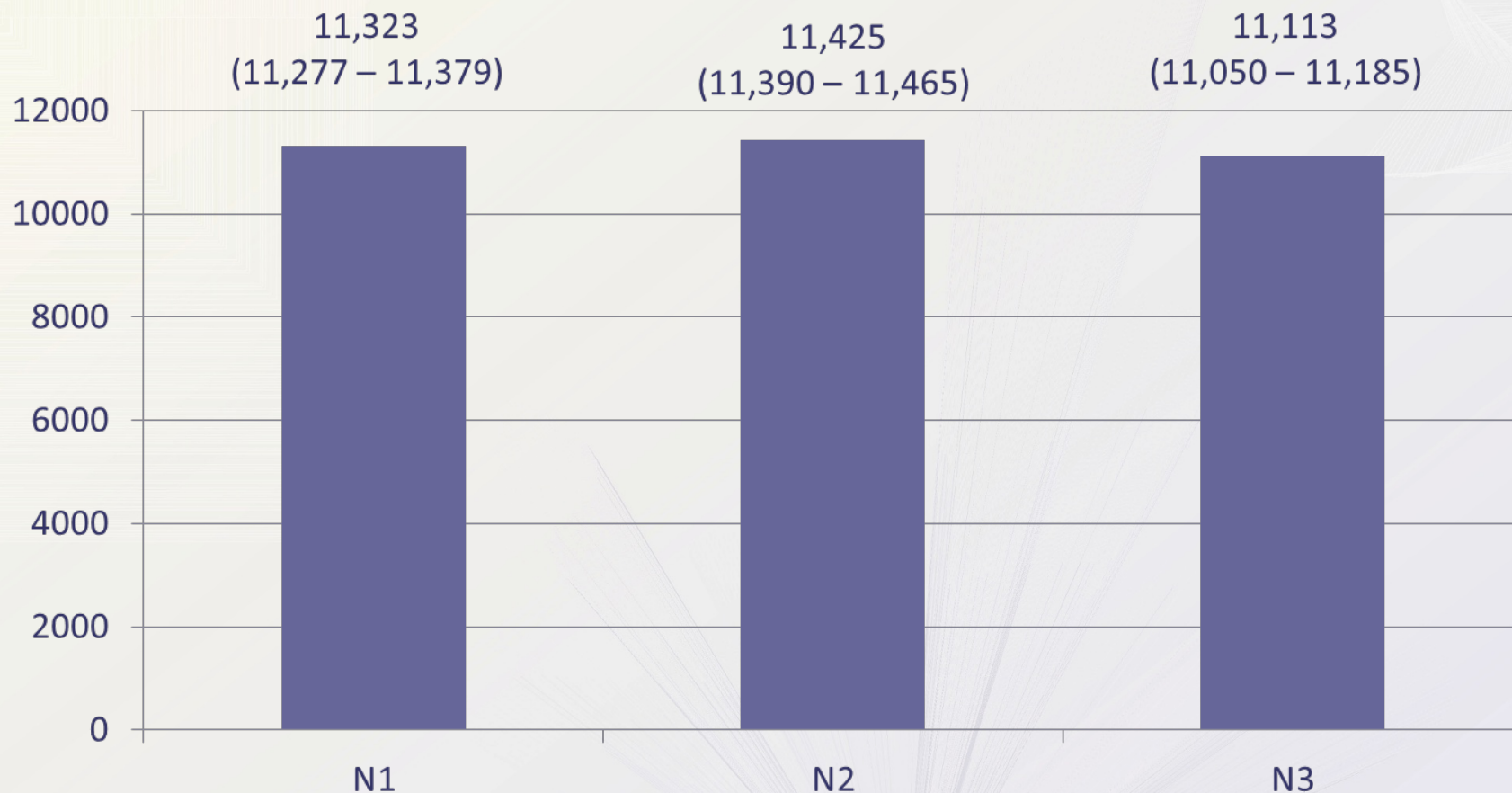
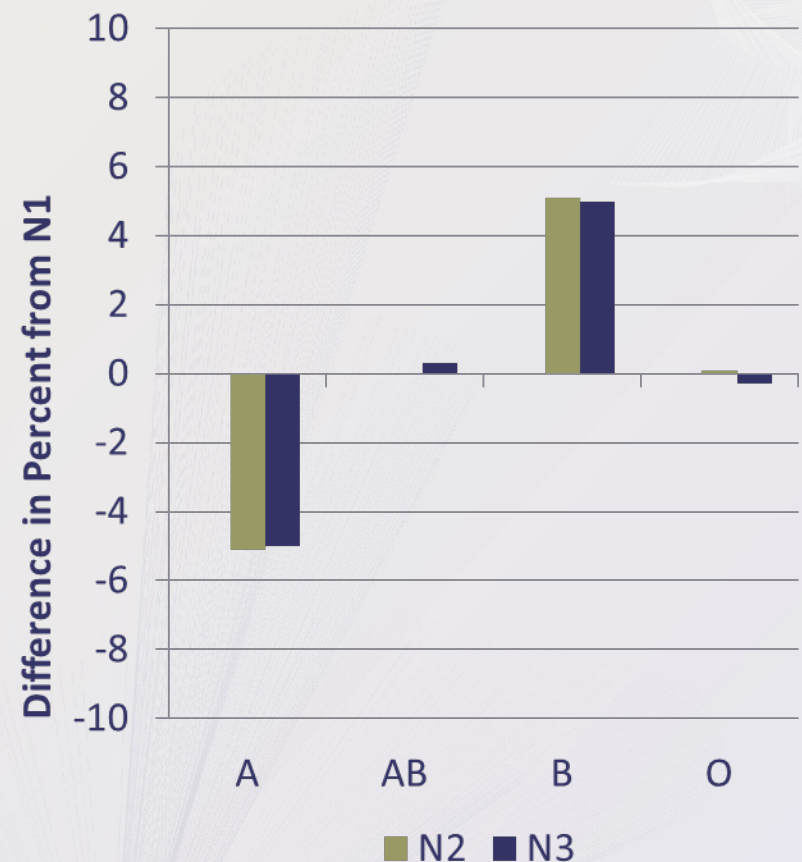
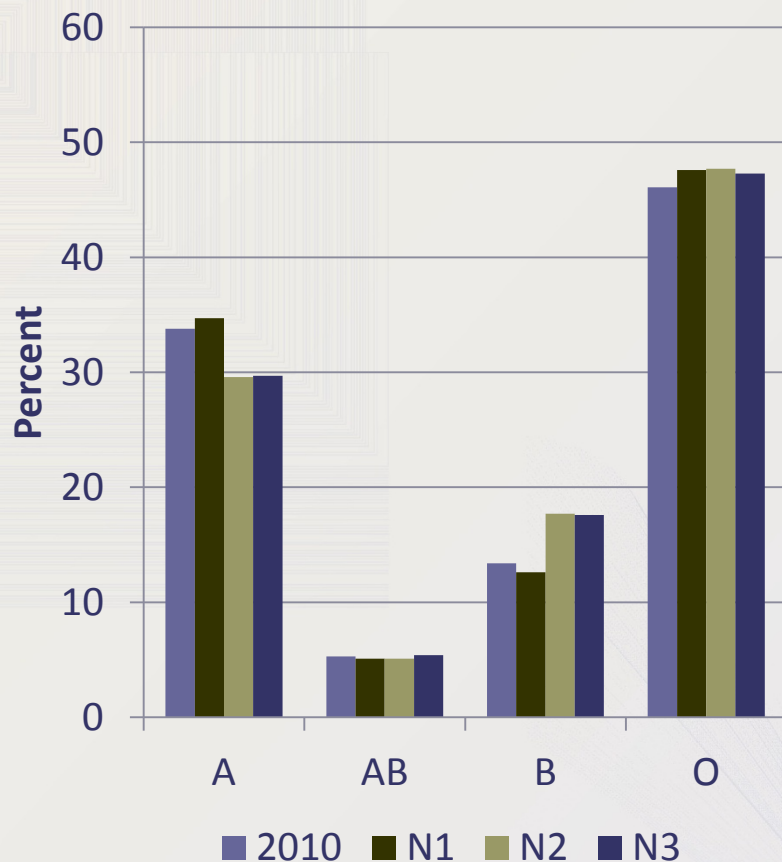


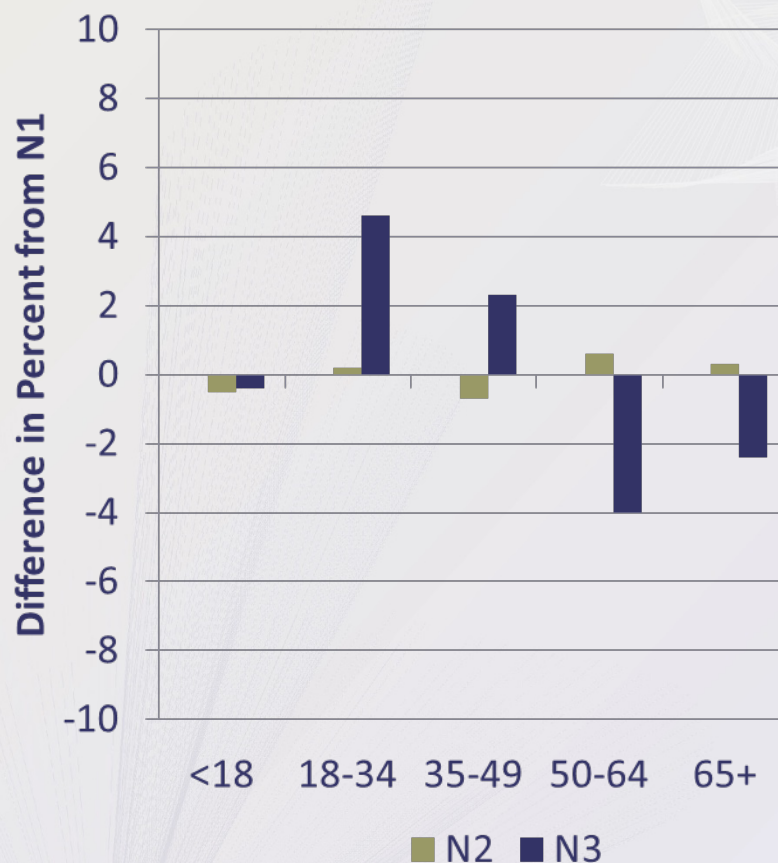
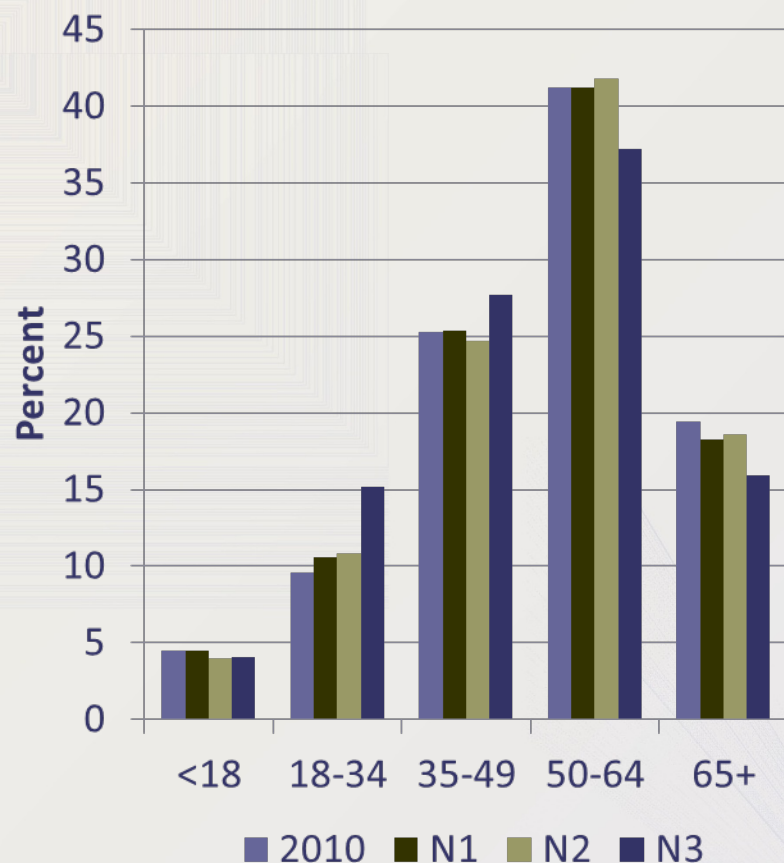
Average Primary KI + KP Transplants Per Run



Kidney Transplants, by Recipient Blood Type



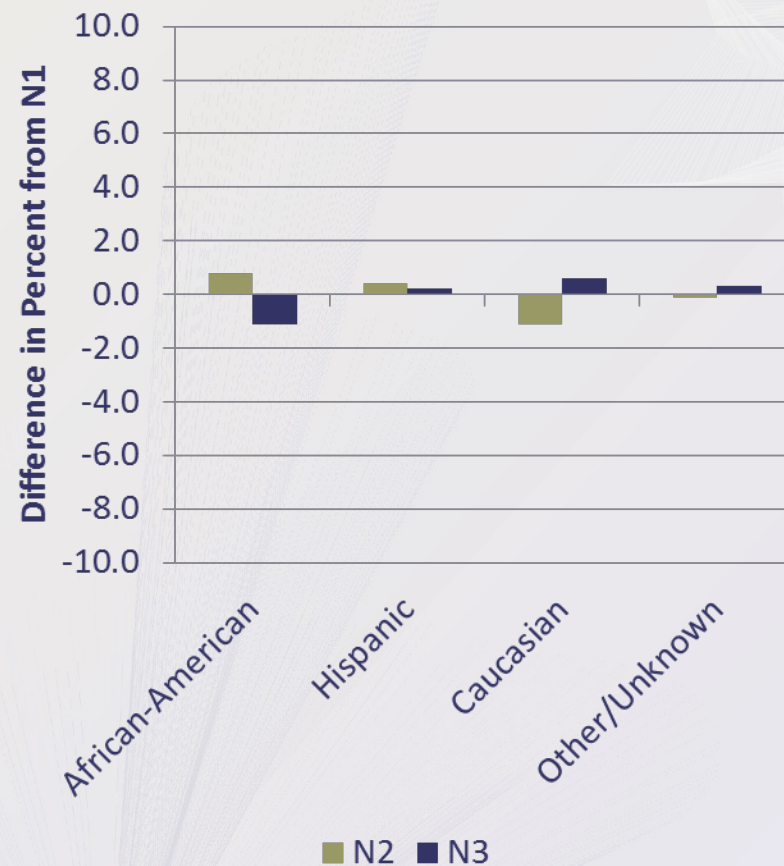
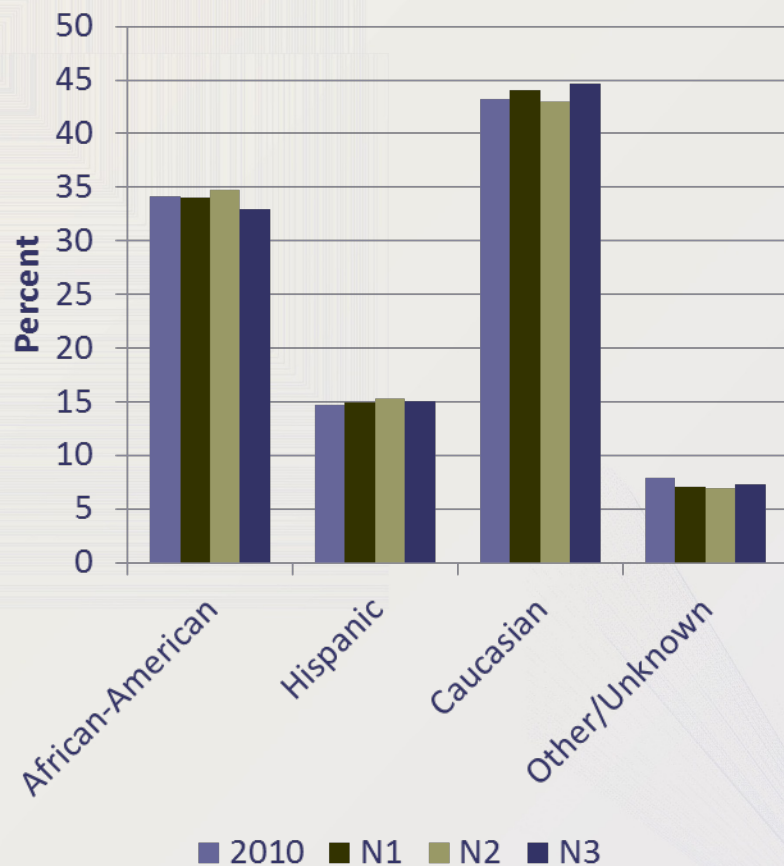
Kidney Transplants, by Recipient Age



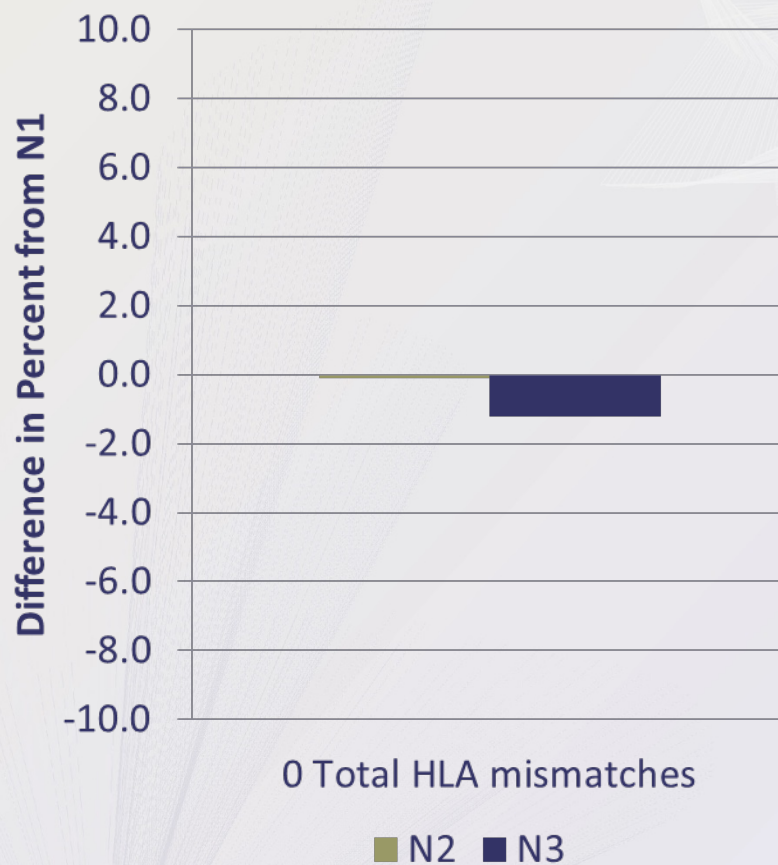
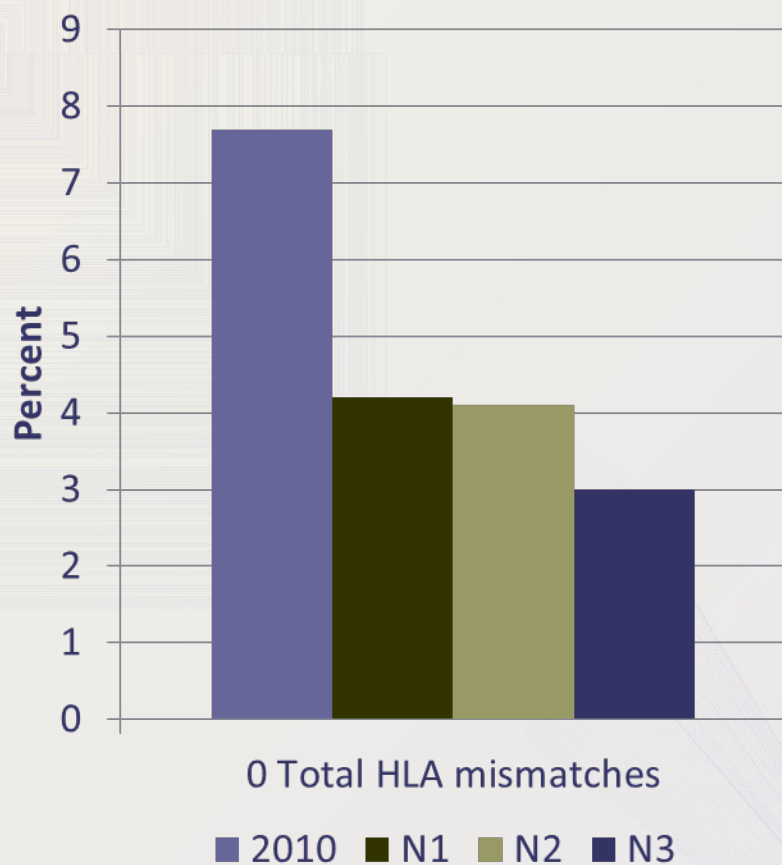
Counts of Kidney Transplants, by Recipient Age

	Age Group									
Run	<18	vs N1	18-34	vs N1	35-49	vs N1	50-64	vs N1	65+	vs N1
N1	482	-	1128	-	2704	-	4381	-	1945	-
N2	438	-44	1173	+45	2680	-24	4539	+158	2018	+73
N3	430	-52	1599	+471	2919	+215	3922	-459	1681	-264

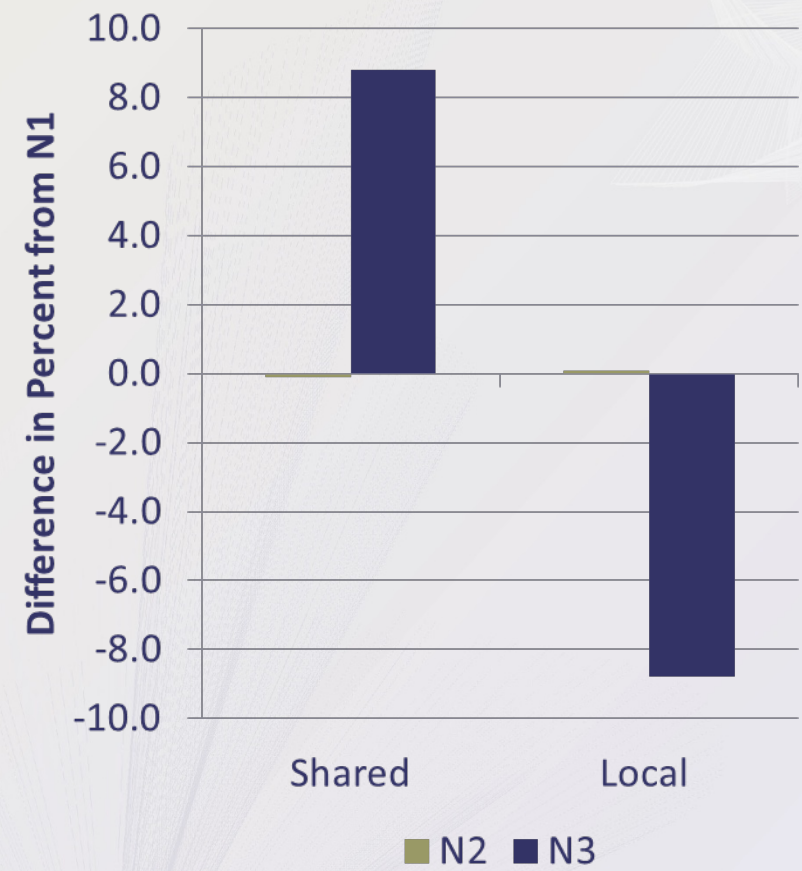
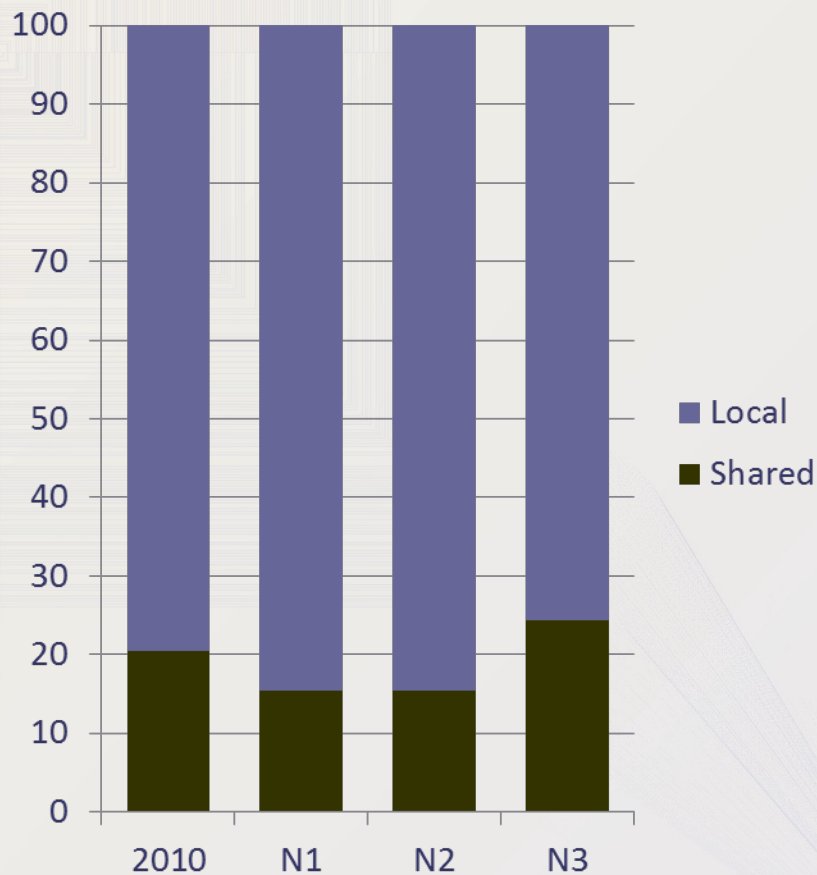
Kidney Transplants, by Recipient Race



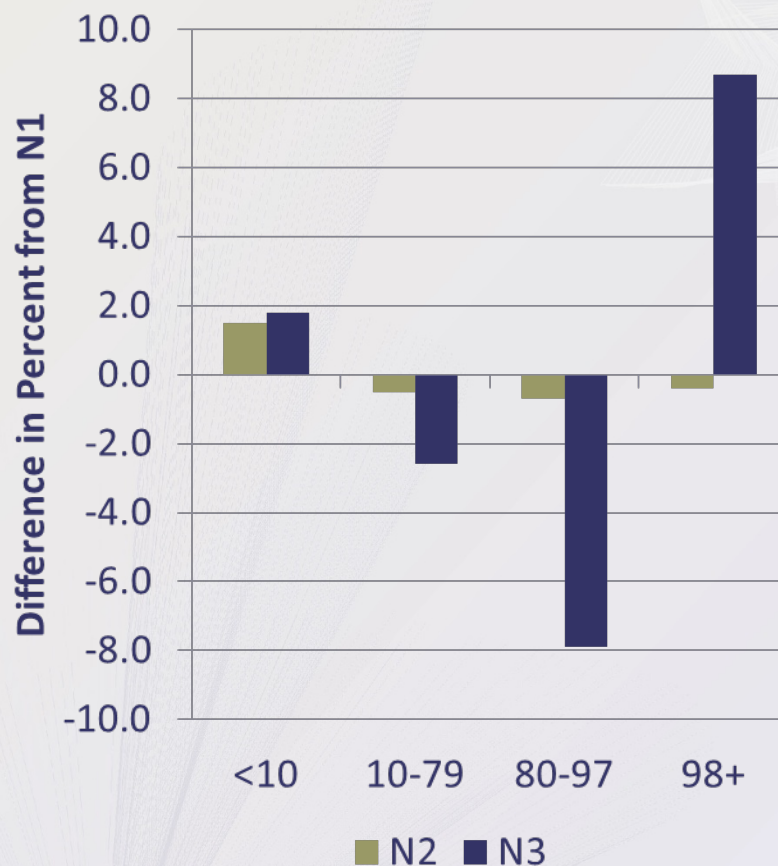
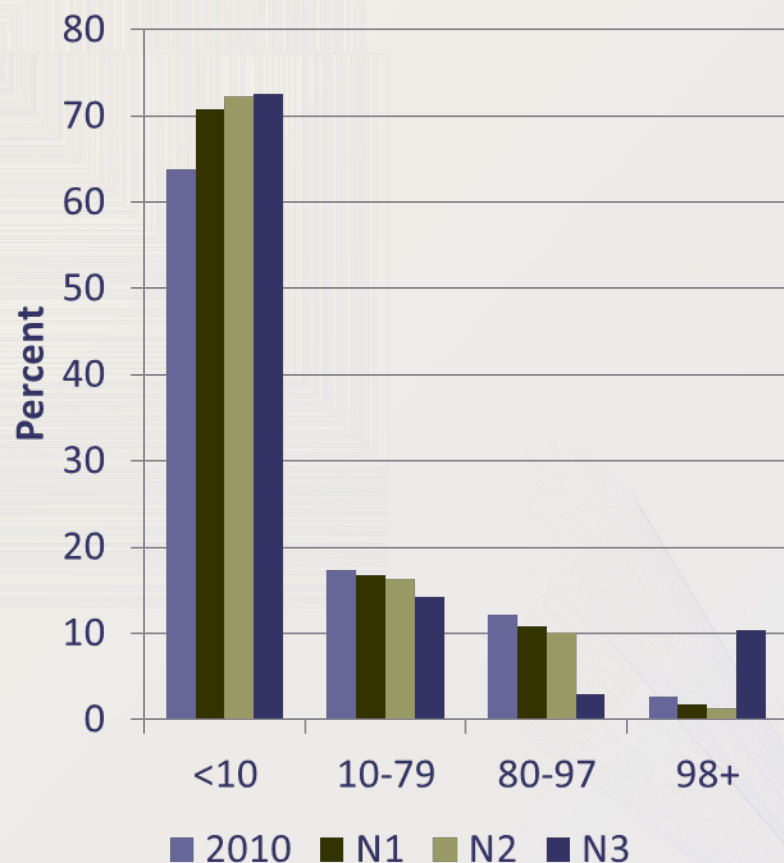
Kidney Transplants, by 0 HLA Mismatches



Kidney Transplants, by Organ Sharing



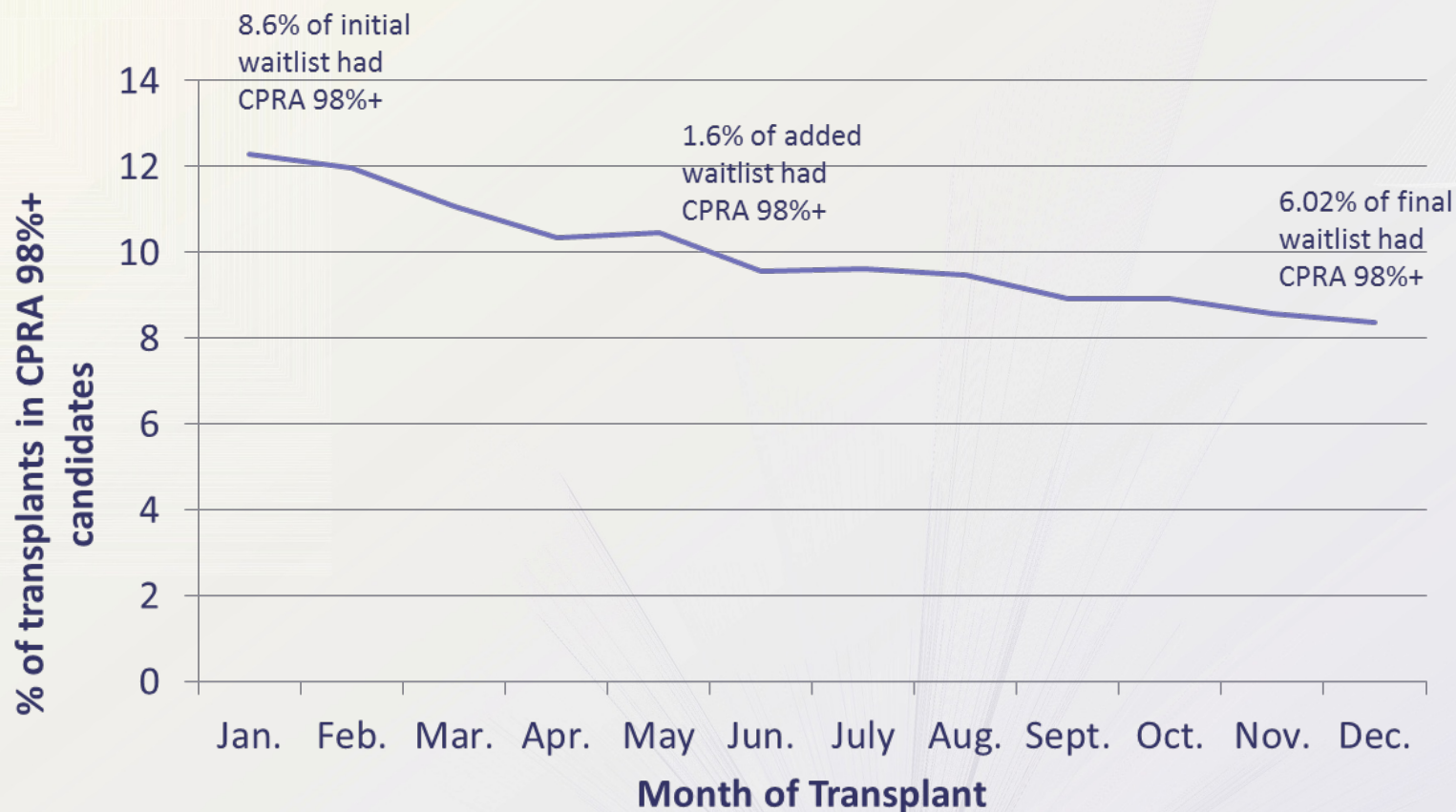
Kidney Transplants, by Recipient CPRA



Counts of Kidney Transplants, by Recipient CPRA

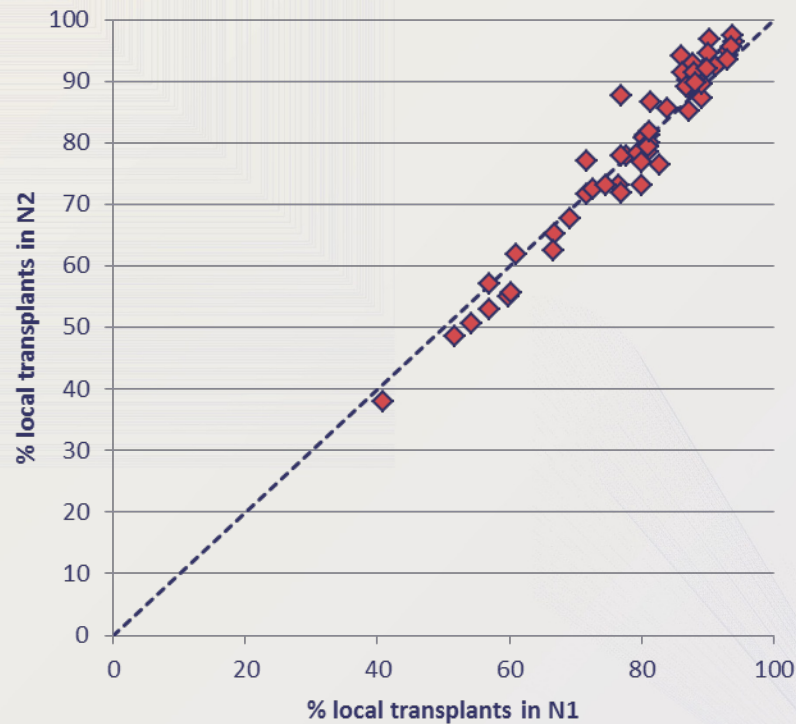
	CPRA Group							
Run	<10	vs N1	10-79	vs N1	80-97	vs N1	98+	vs N1
N1	7523	-	1788	-	1153	-	176	-
N2	7832	+309	1773	-15	1098	-55	145	-31
N3	7651	-128	1494	-294	304	-849	1103	+927

Bolus Effect for CPRA 98%+ KIA candidates in N3

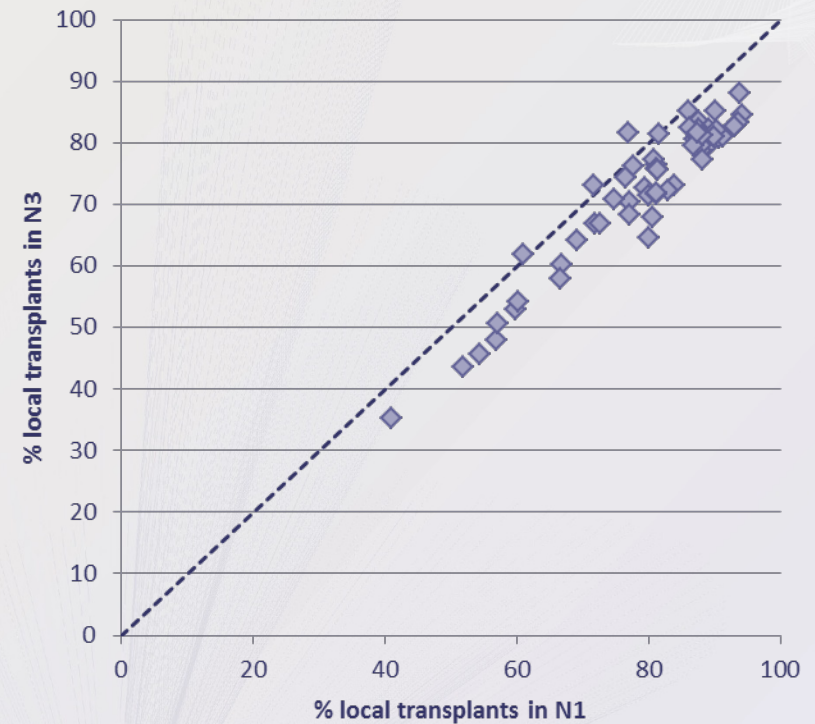


Percent of Local Kidneys, by DSA

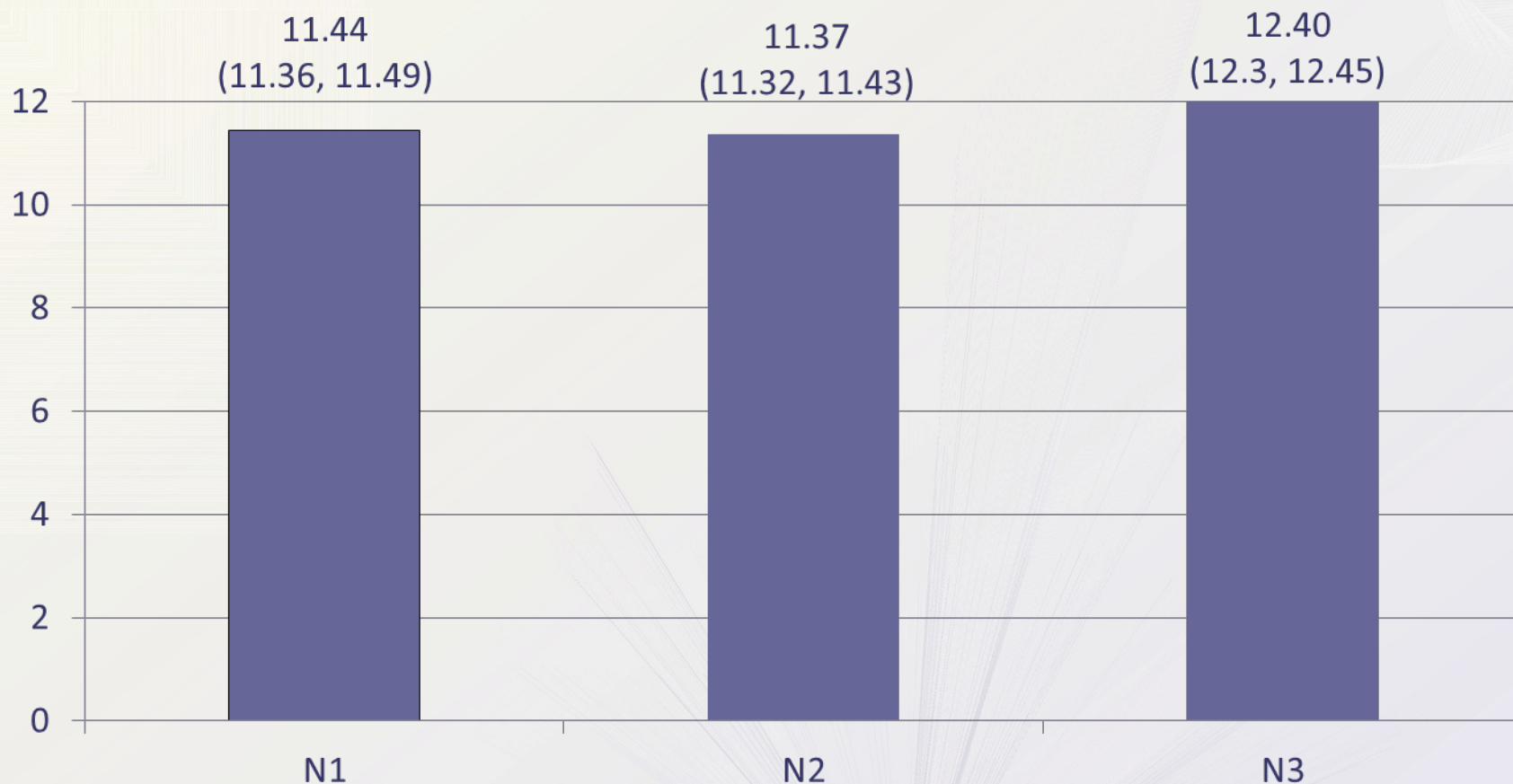
Percent of organs that are transplanted locally, by DSA



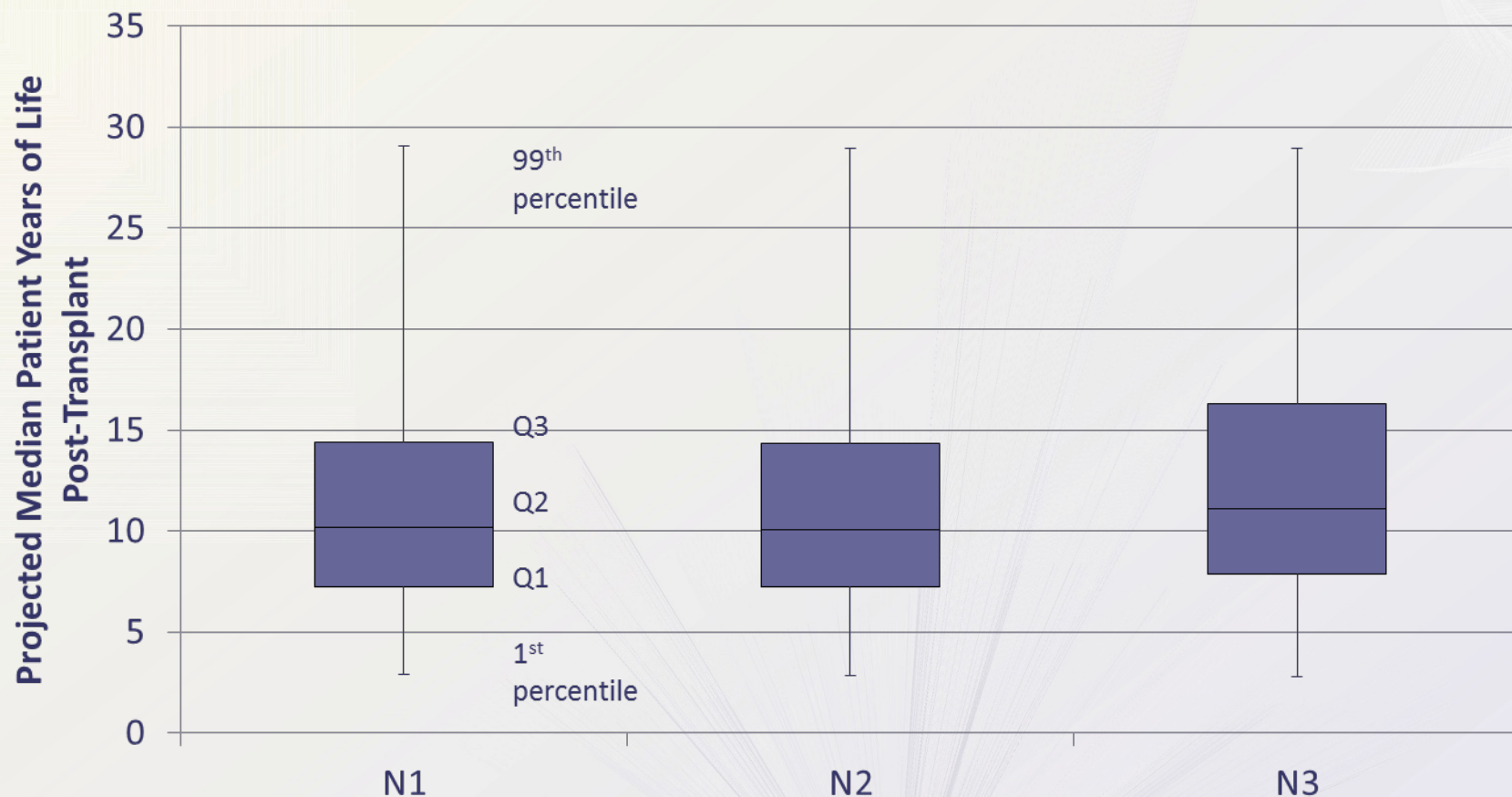
Percent of organs that are transplanted locally, by DSA



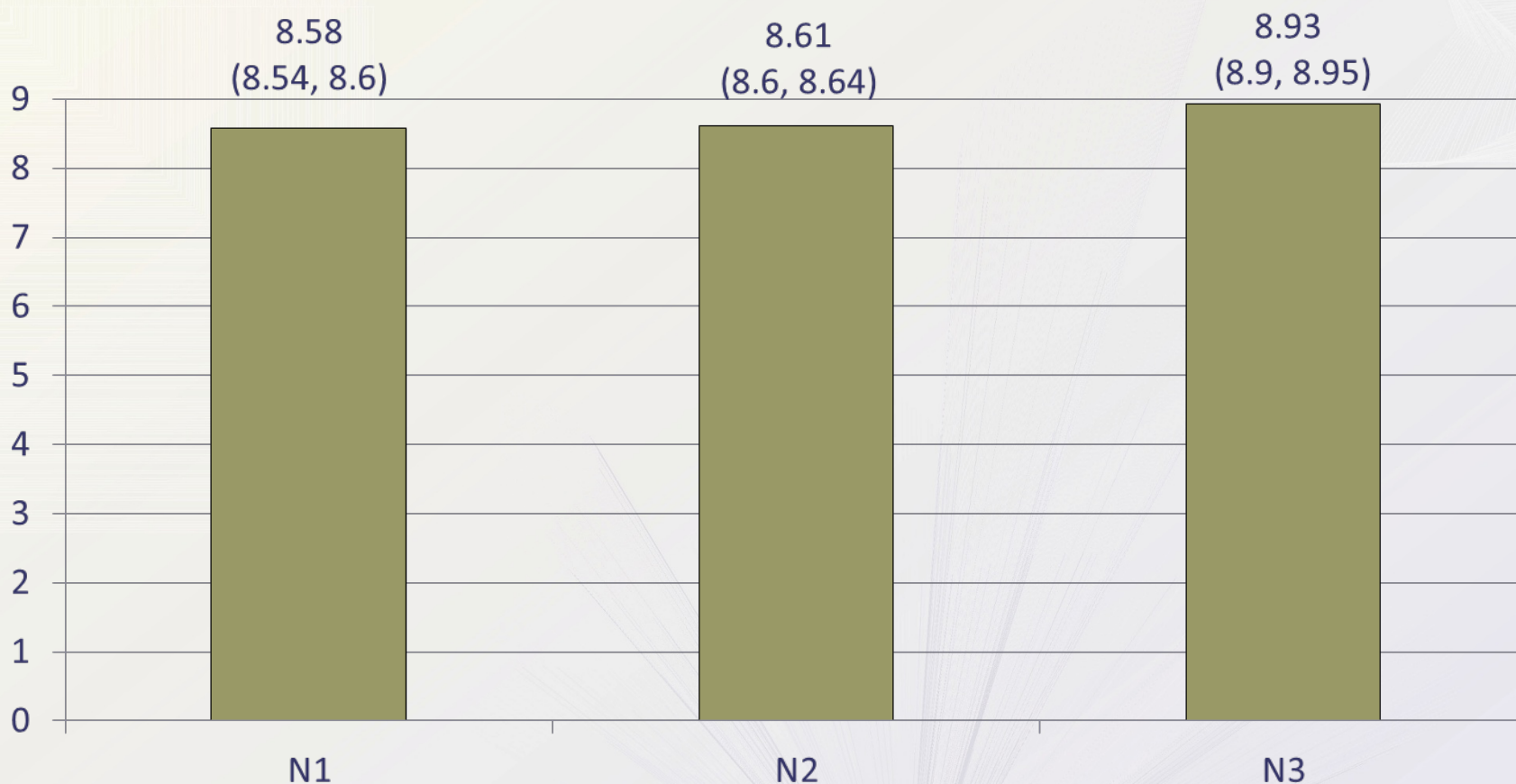
Projected median patient years of life per transplant: average, minimum, maximum of runs



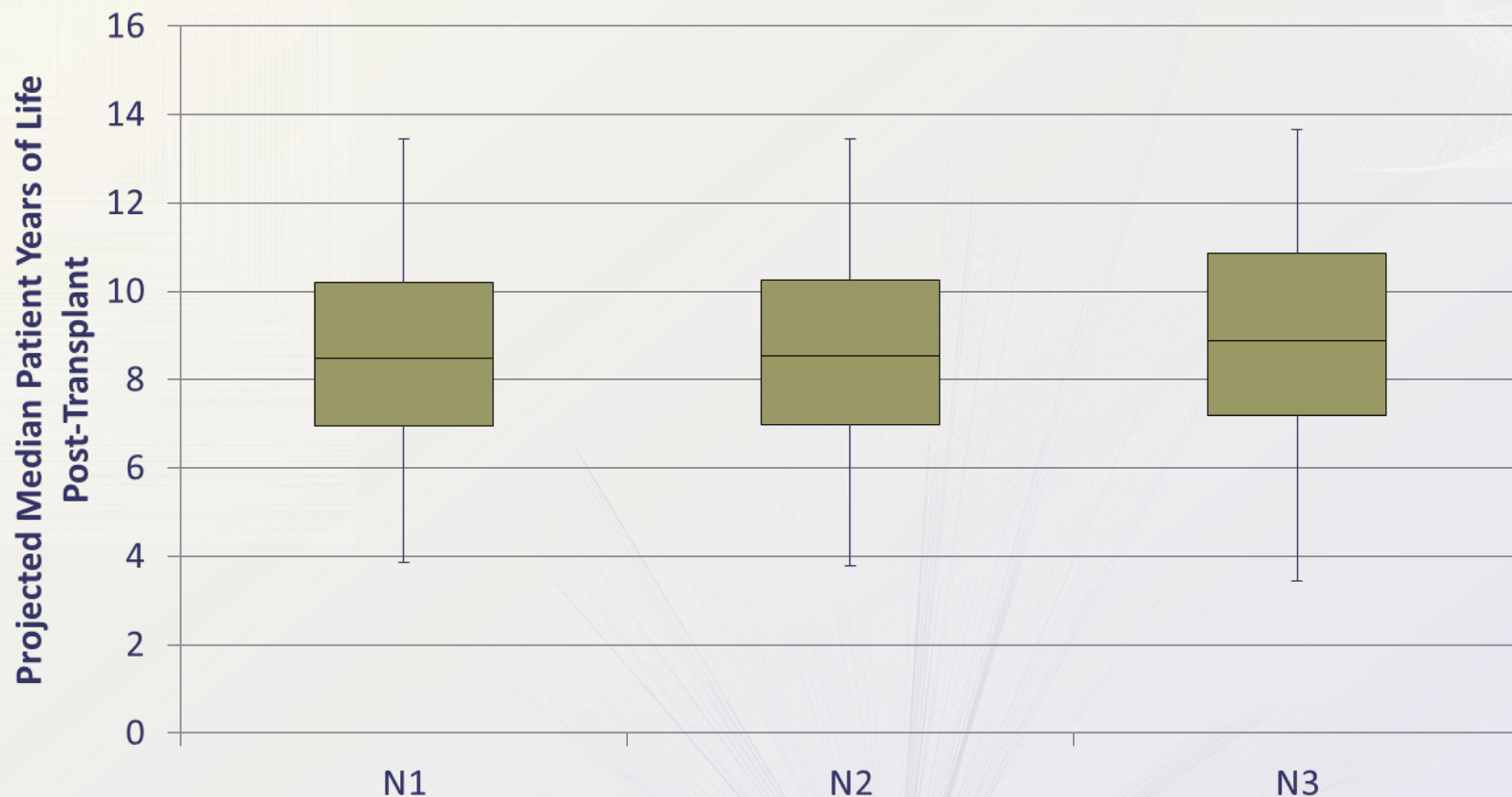
Projected median patient years of life per transplant



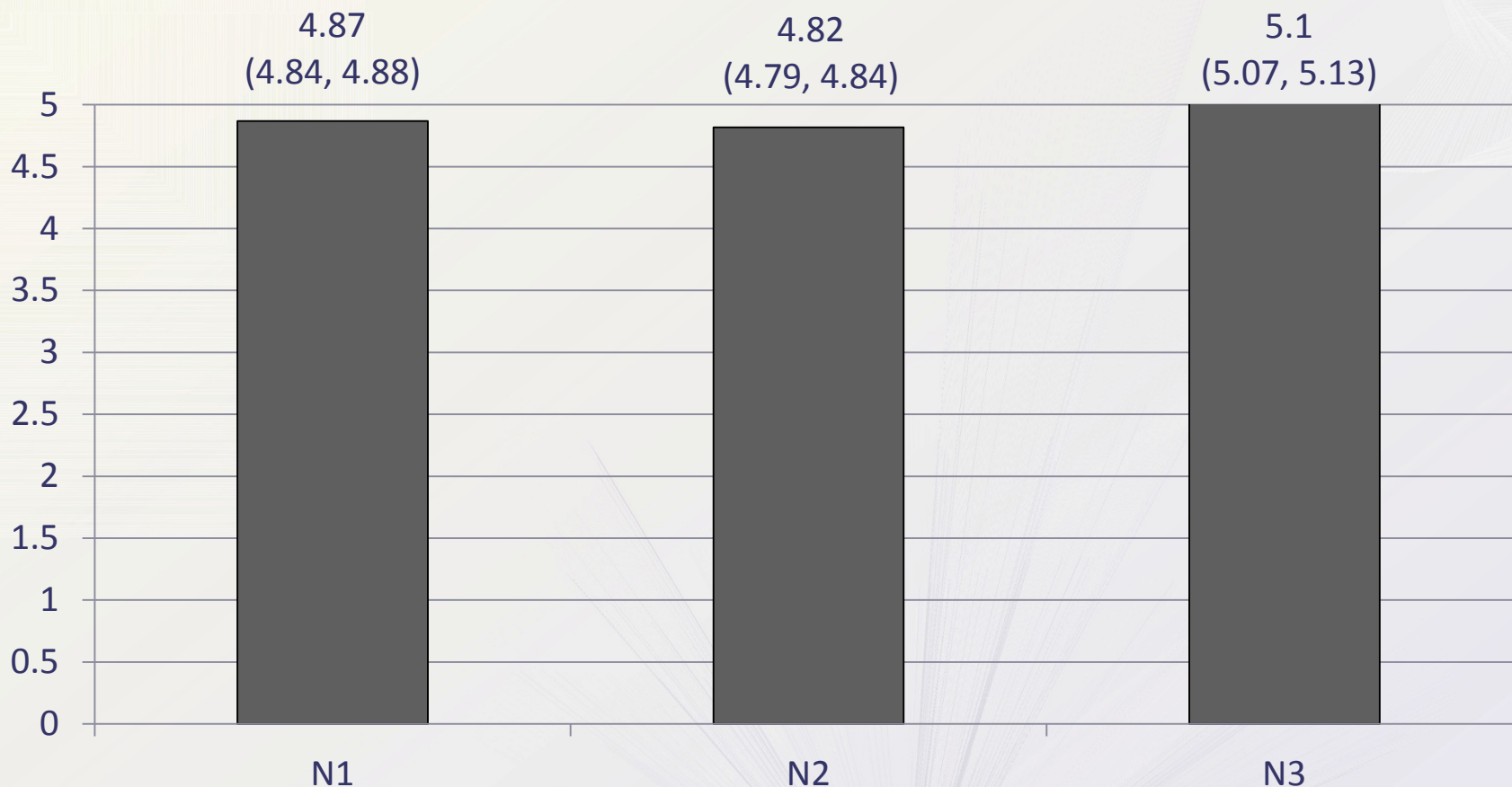
Projected median graft years of life per transplant: average, minimum, maximum of runs



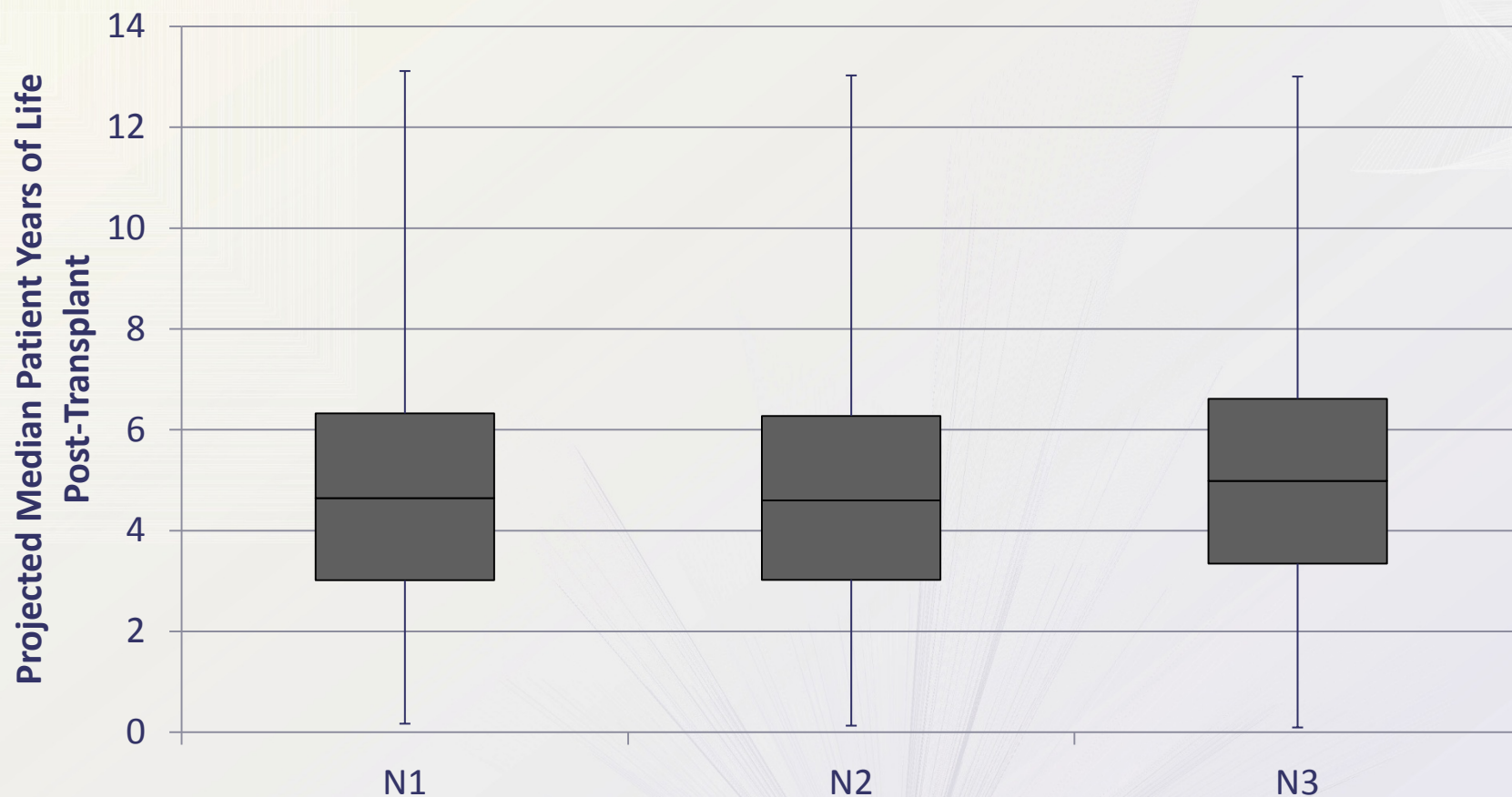
Projected median graft years of life per transplant



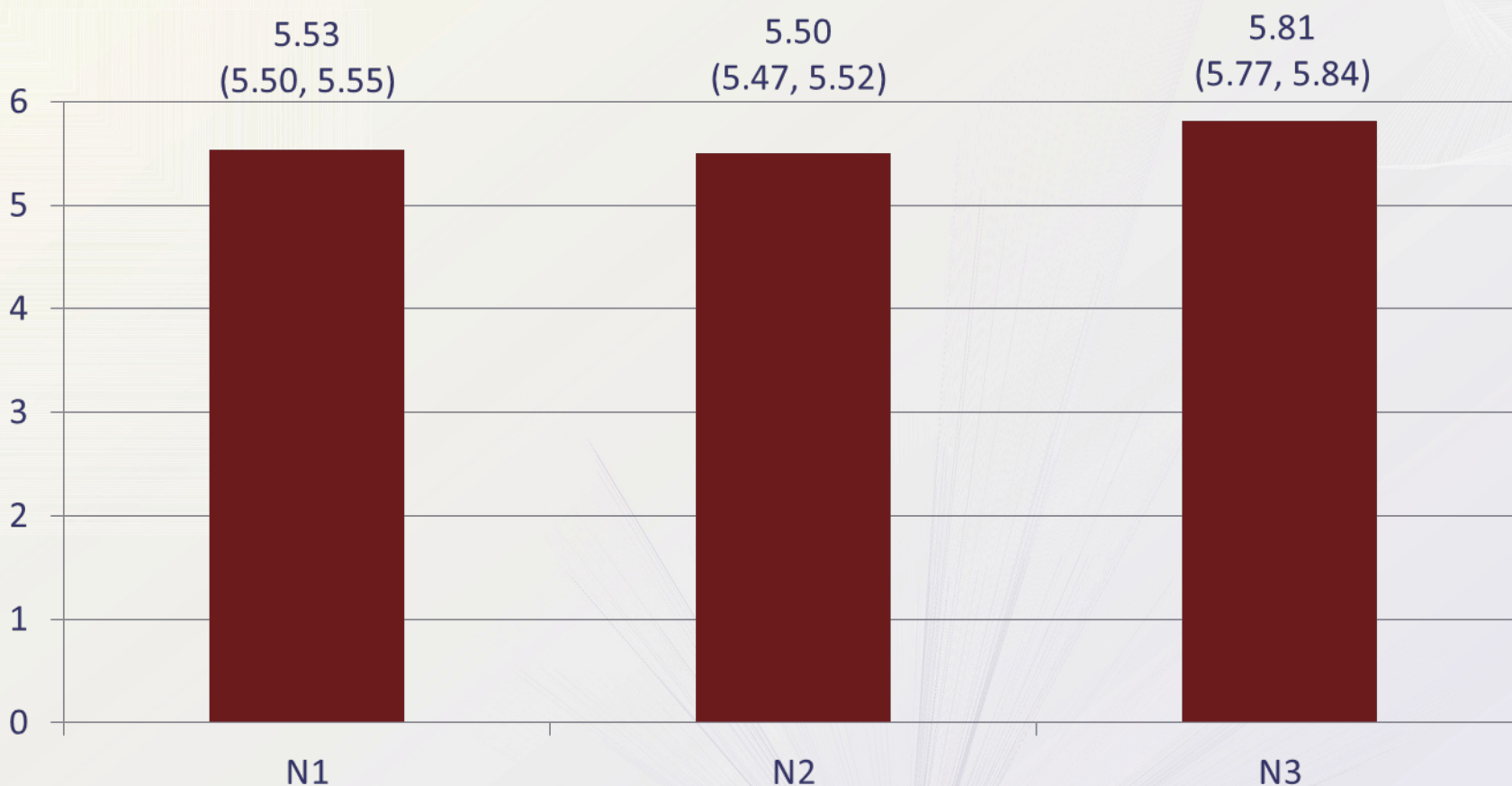
Projected median years of benefit per transplant: average, minimum, maximum of runs



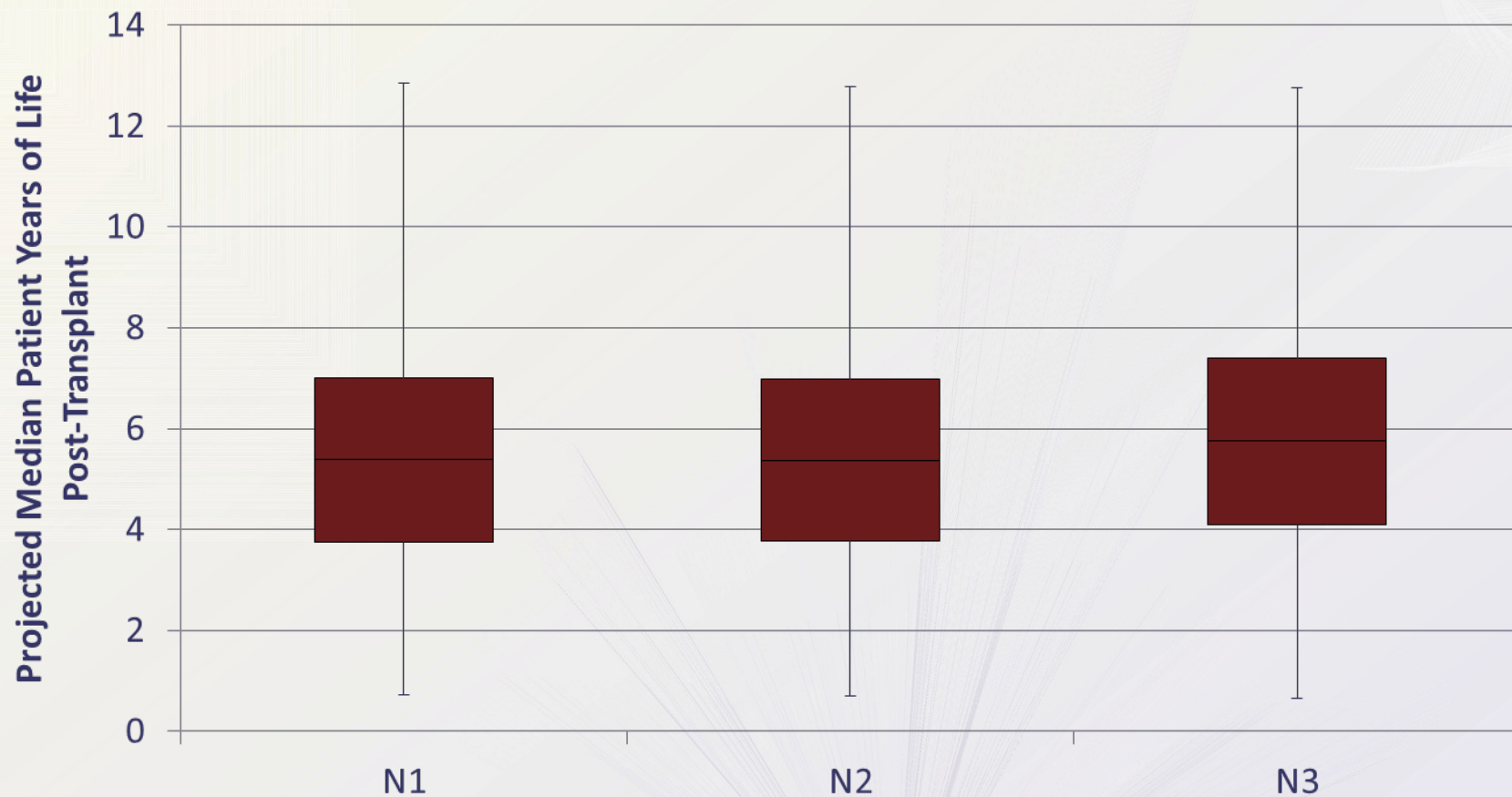
Projected median years of benefit per transplant versus waitlist



Projected median LYFT per transplant: average, minimum and maximum of runs



Projected median LYFT per transplant



Summary Table

Average for 10 iterations	N1	N2	N3
Number of candidates (on waitlist at start or joining during run)	122,669	122,669	122,669
Average number of primary transplant recipients (KI+KP)	11,323	11,425	11,113
Average median lifespan post-transplant (min, max of runs)	11.44 (11.36, 11.49)	11.37 (11.32, 11.43)	12.41 (12.3, 12.45)
Average median graft years of life (min, max of runs)	8.58 (8.54, 8.60)	8.61 (8.6, 8.64)	8.93 (8.9, 8.95)
Average median extra life-years for tx recipient versus waitlist candidate (min, max of runs)	4.87 (4.84, 4.88)	4.82 (4.79, 4.84)	5.11 (5.07, 5.13)
Average median LYFT per transplant (min, max of runs)	5.53 (5.50, 5.55)	5.50 (5.47, 5.52)	5.81 (5.77, 5.84)