



# UNOS Member Survey

*Comparison of results between 2014 and 2015*

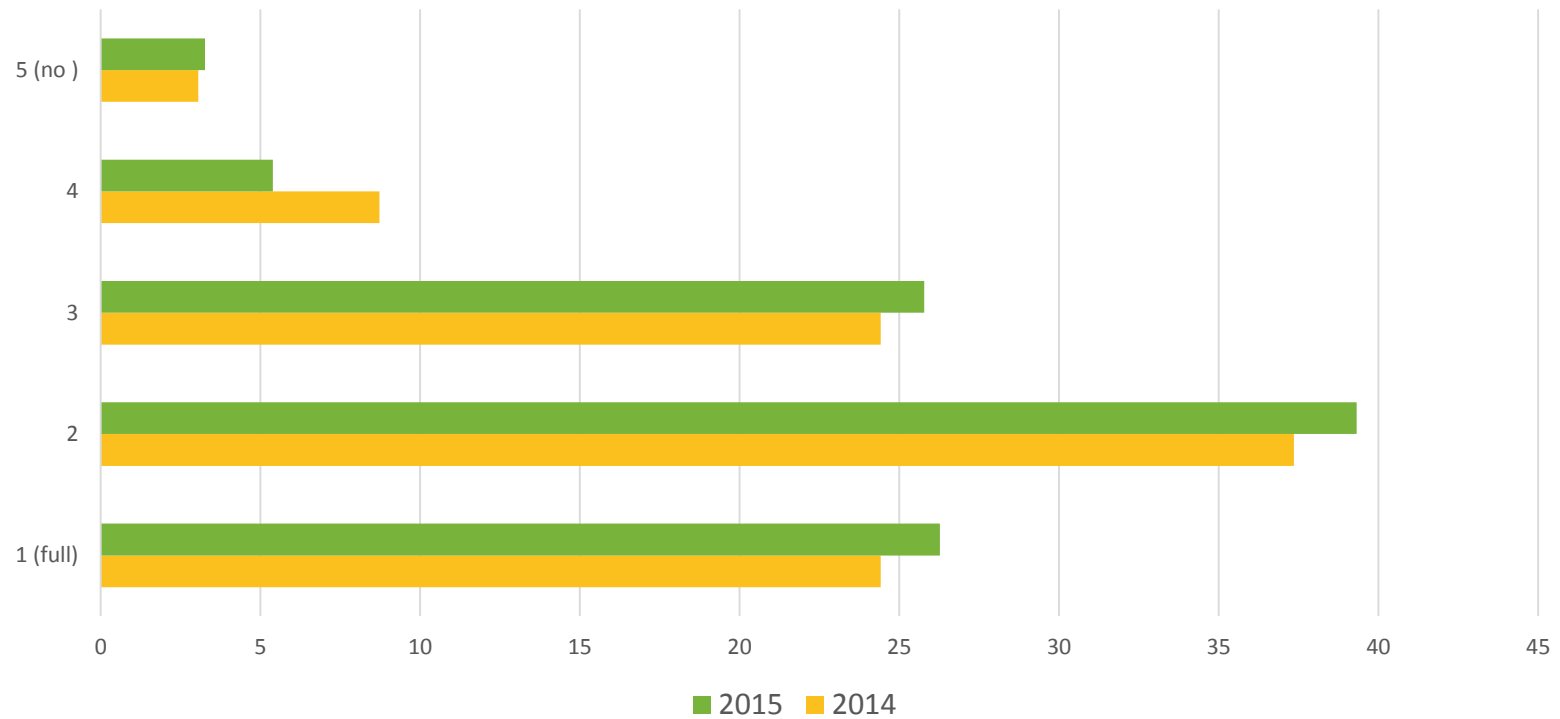
# Stuff you should know

- These charts compare the answers to questions in the 2014 member survey with answers to the same questions in the 2015 member survey.
- 694 people responded to the 2014 survey. 614 people responded to the 2015 survey. To be consistent, we used percentages of respondents rather than the actual numbers of respondents.
- In a few cases, the wording or format of a question changed slightly from 2014 to 2015 so we weren't able to do a direct comparison.

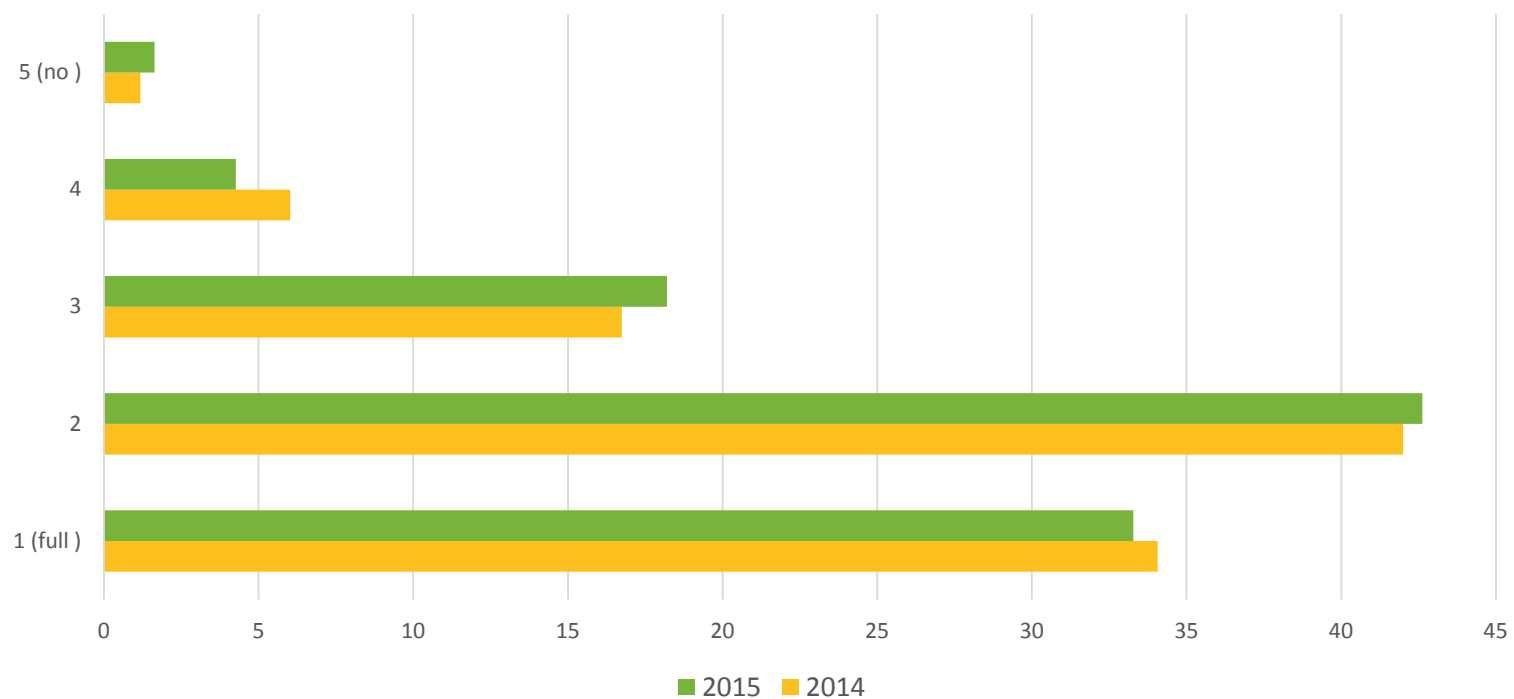
We asked them to rate how well they understood the following processes with 1 representing full understanding and 5 representing no understanding.

- How policies are made
- What members need to do to comply with policy
- How UNOS functions as the OPTN contractor
- How board & committee members are chosen
- What functions UNOS performs in addition to serving as the OPTN contractor

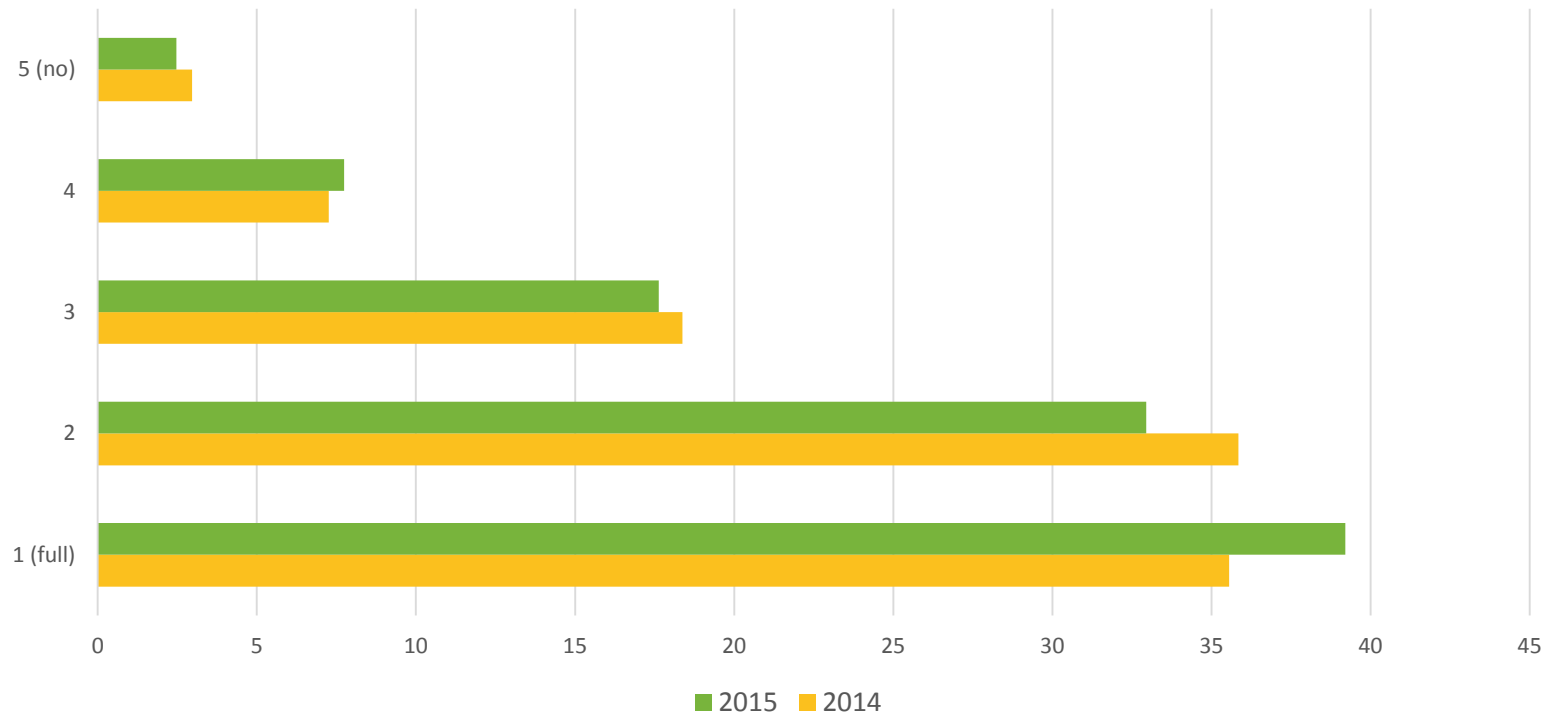
## Level of understanding of how policies are made



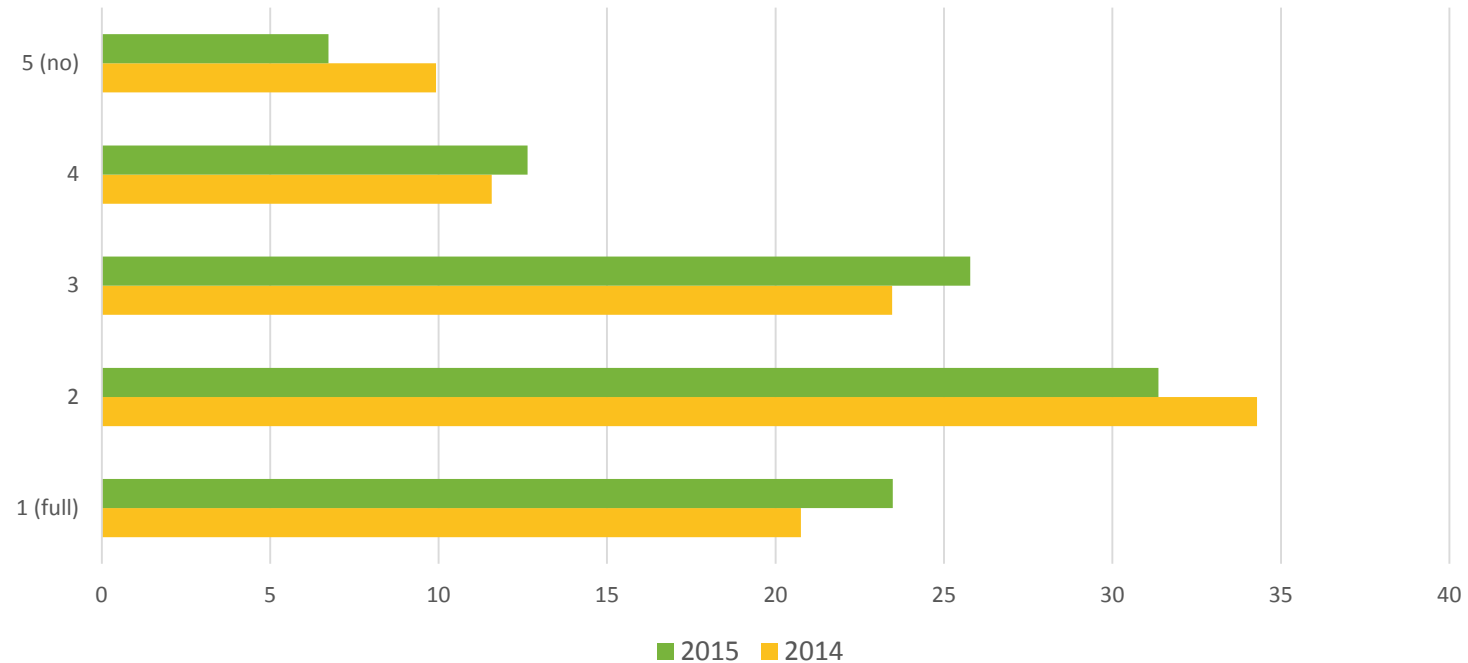
## Level of understanding of what members need to do to be compliant with policy



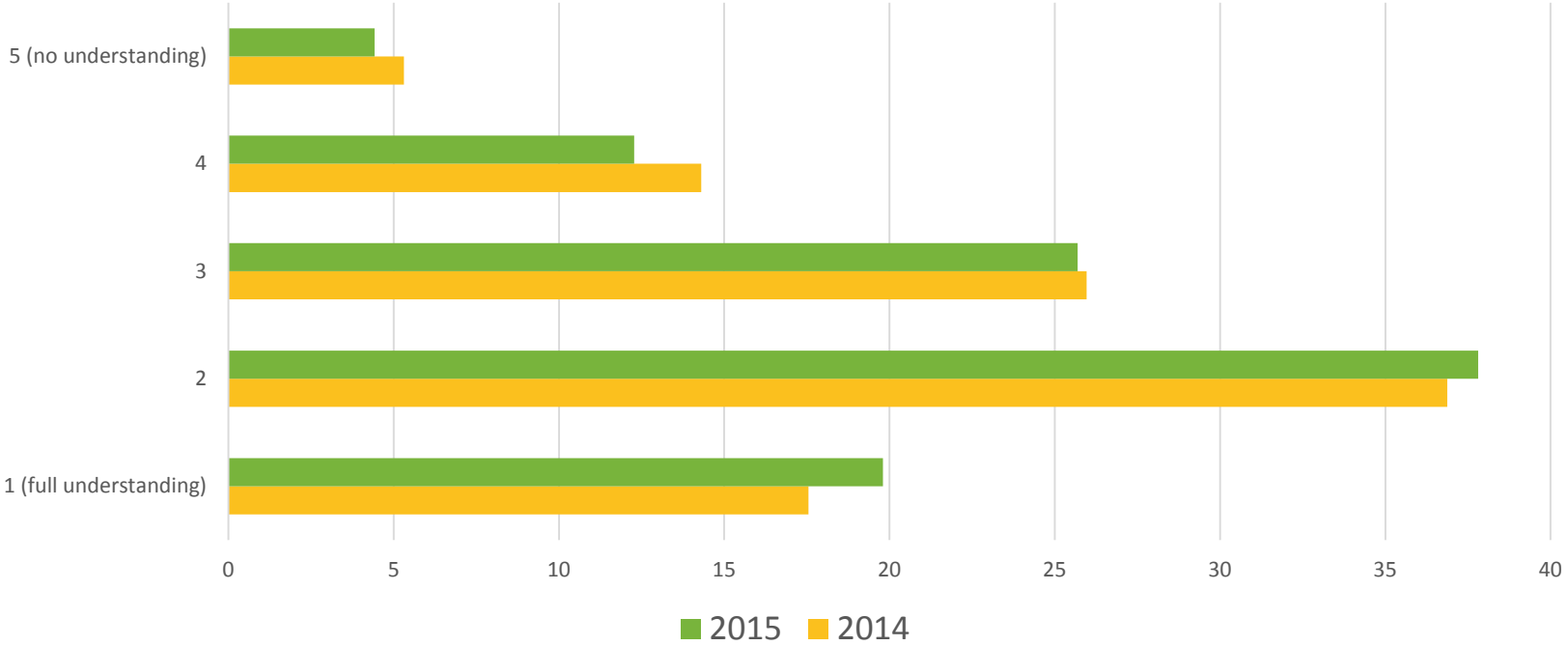
## Level of understanding of how UNOS functions as the OPTN contractor



## Level of understanding of how board and committee members are chosen



# Level of understanding of the functions UNOS performs in addition to serving as the OPTN contractor

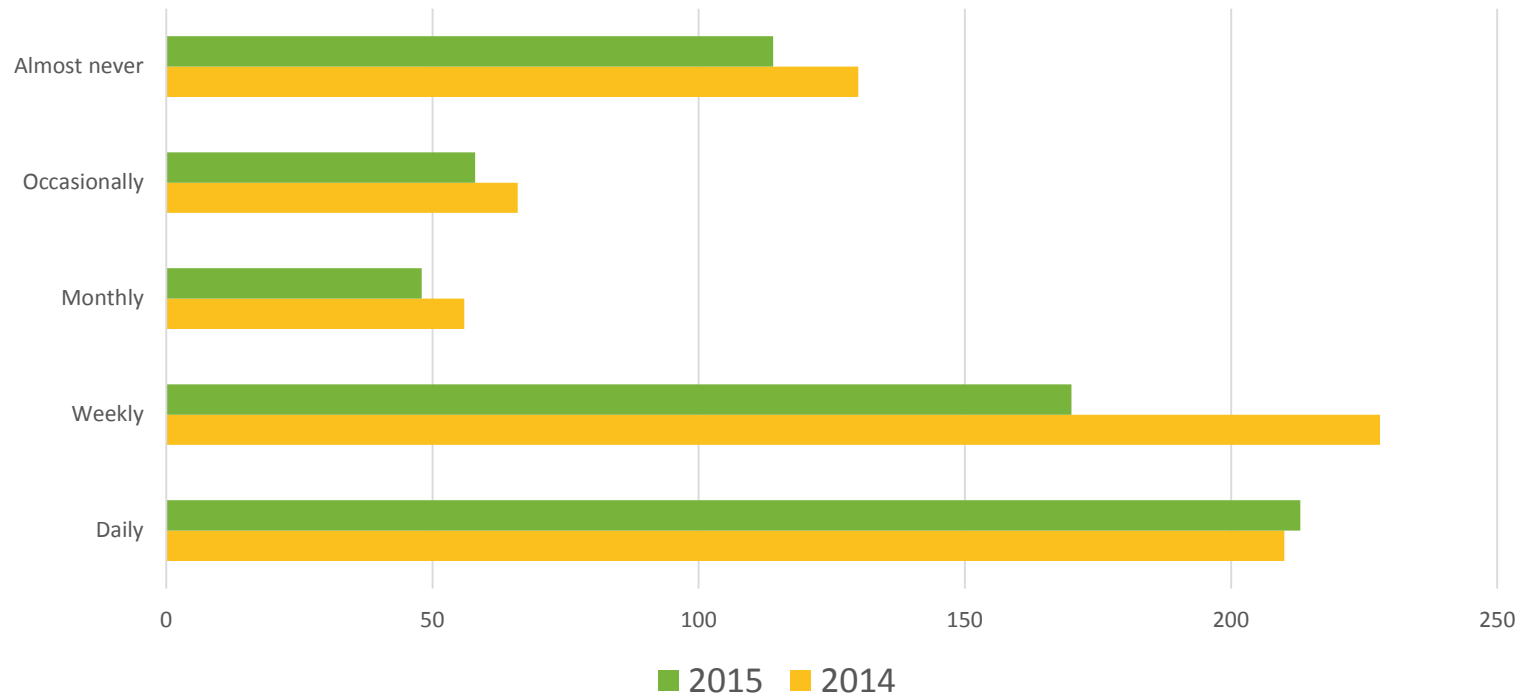




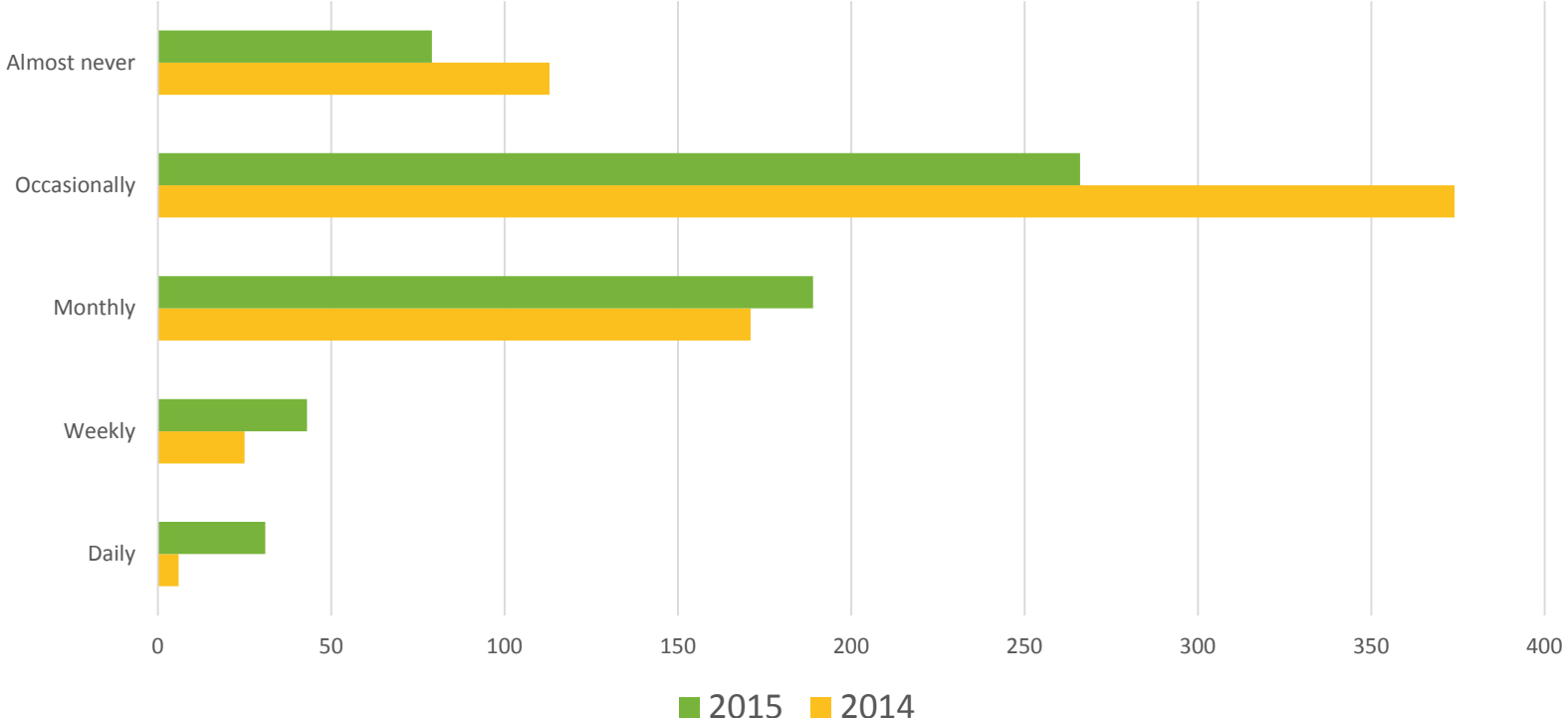
We asked them to indicate their level of involvement in the following activities ranging from daily to almost never.

- Reading e-newsletters (Transplant Pro, UNOS Tech News)
  - No comparison data available for this because the 2014 and 2015 questions don't match
- Reading content on websites (Transplant Pro, UNOS, OPTN, etc.)
  - No comparison data because the 2014 and 2015 questions don't match)
- Accessing and entering data in UNet
- Attending webinars
- Responding to surveys
- Contacting your regional administrator or UNOS staff
- Nominating someone for a board or committee position

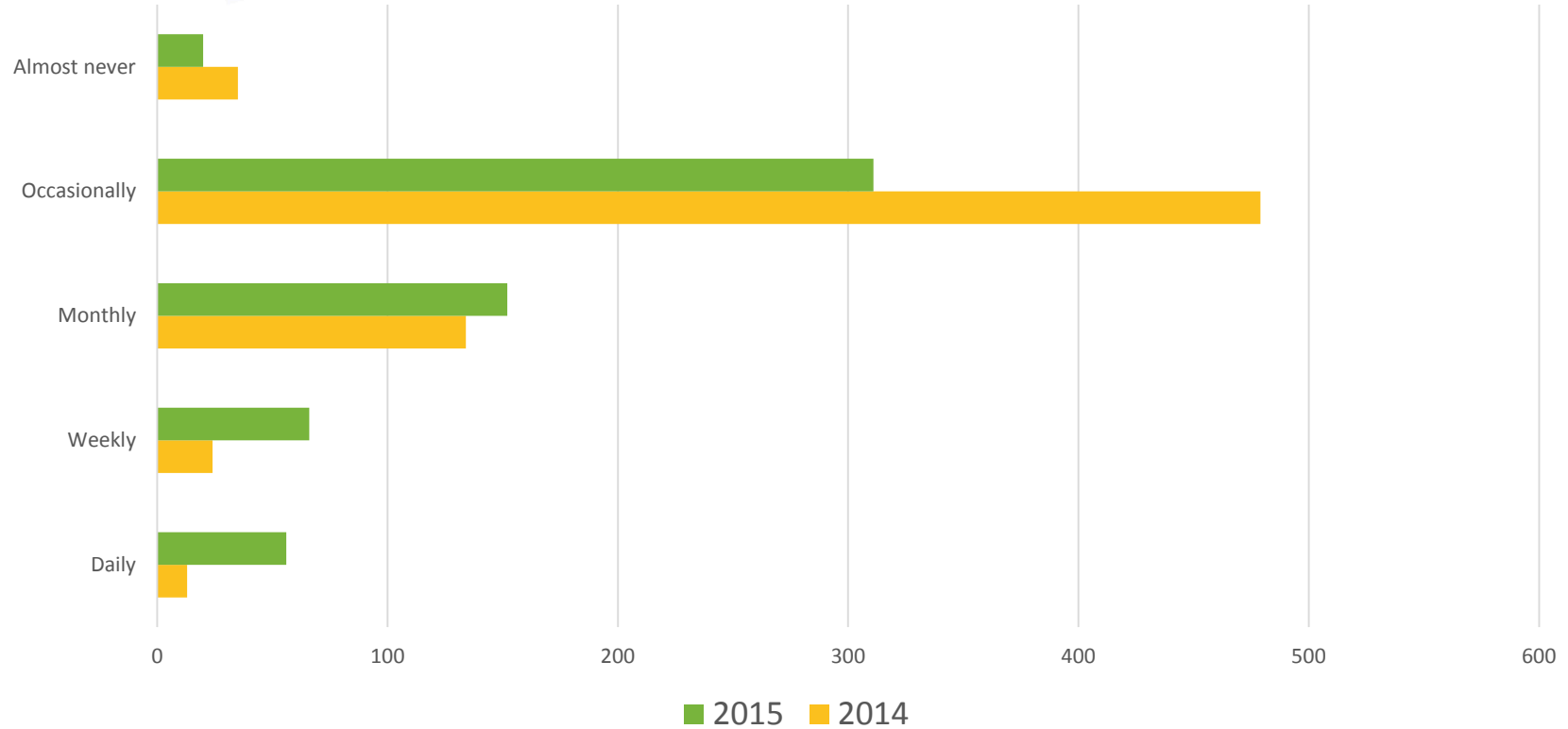
## What is your level of involvement in accessing & entering data in UNet?



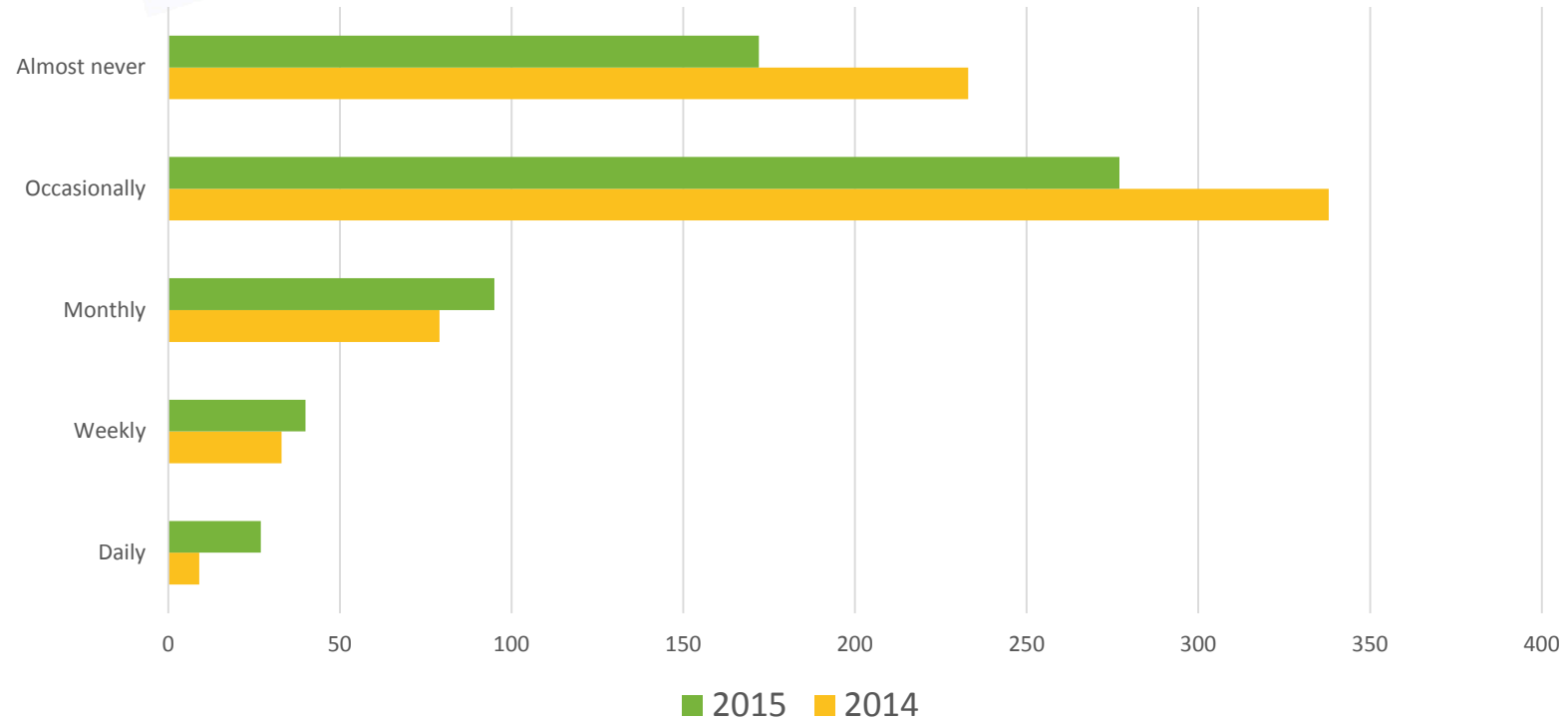
# What is your level of involvement in attending webinars?



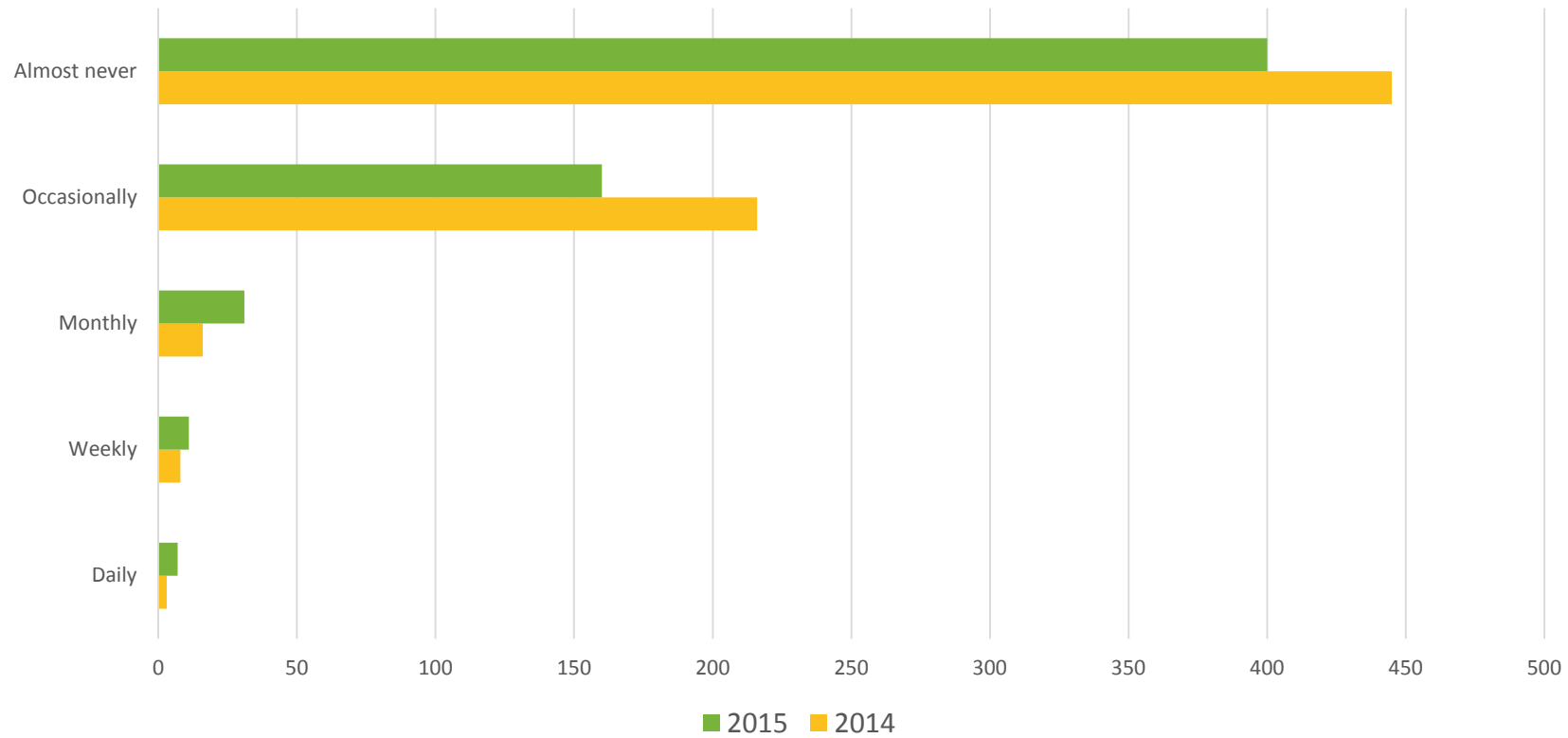
## What is your level of involvement in responding to UNOS Surveys?



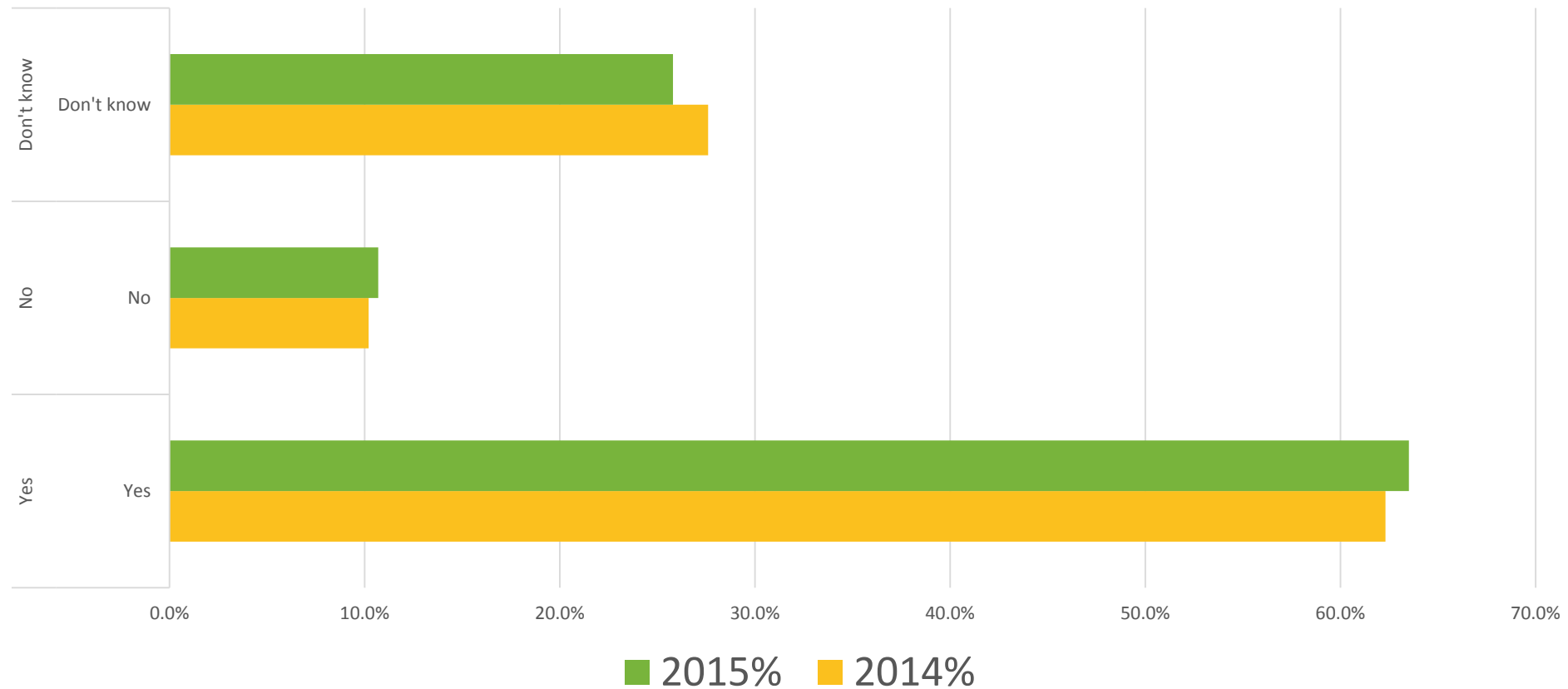
## What is your level of Involvement in contacting UNOS staff?



## What is your level of involvement in nominating someone for board or committee?



# Does UNOS consider your interests as a transplant professional when making policy changes or other admin changes that impact the community?

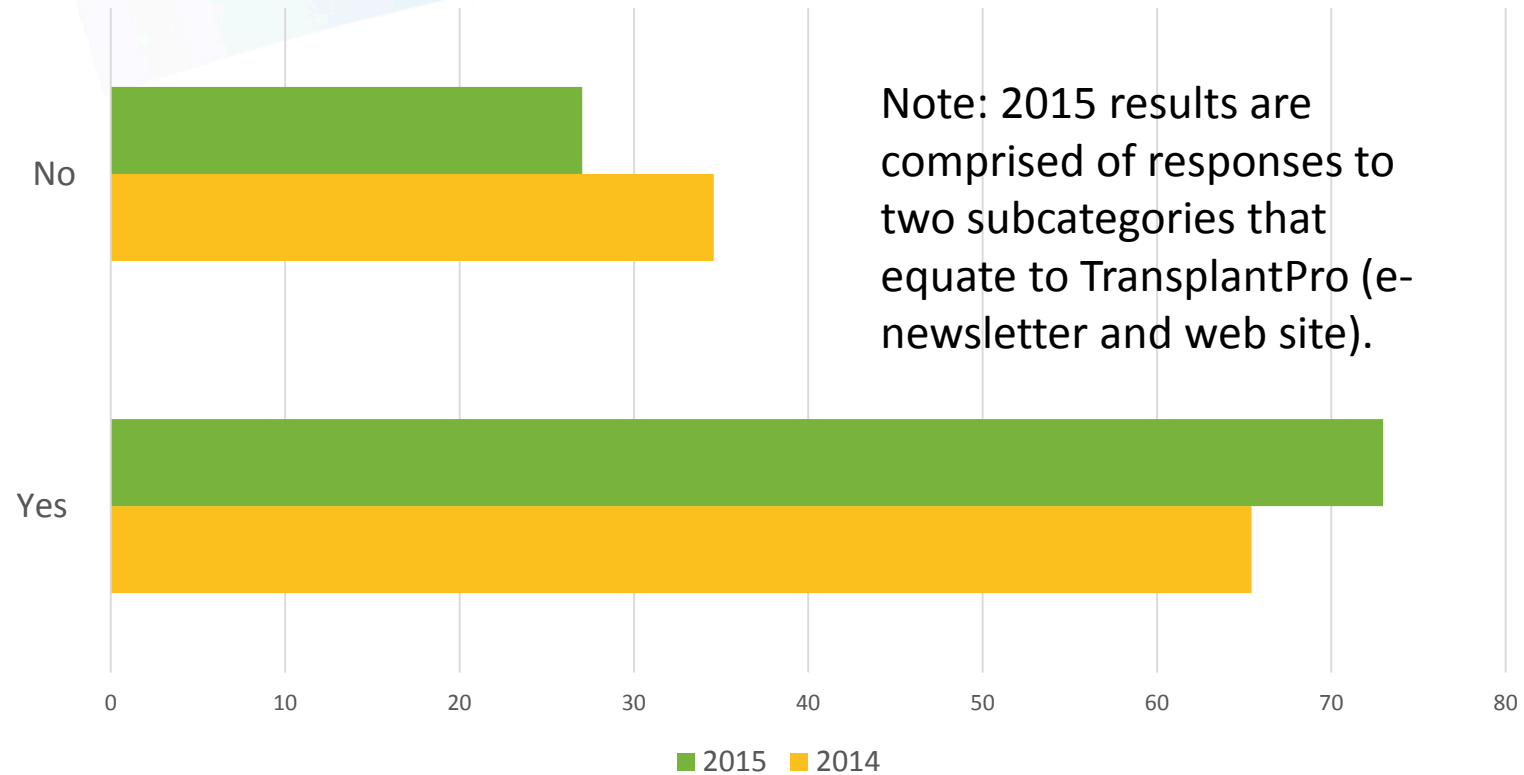


## We asked them if they depended on the following communication vehicles to receive critical information.

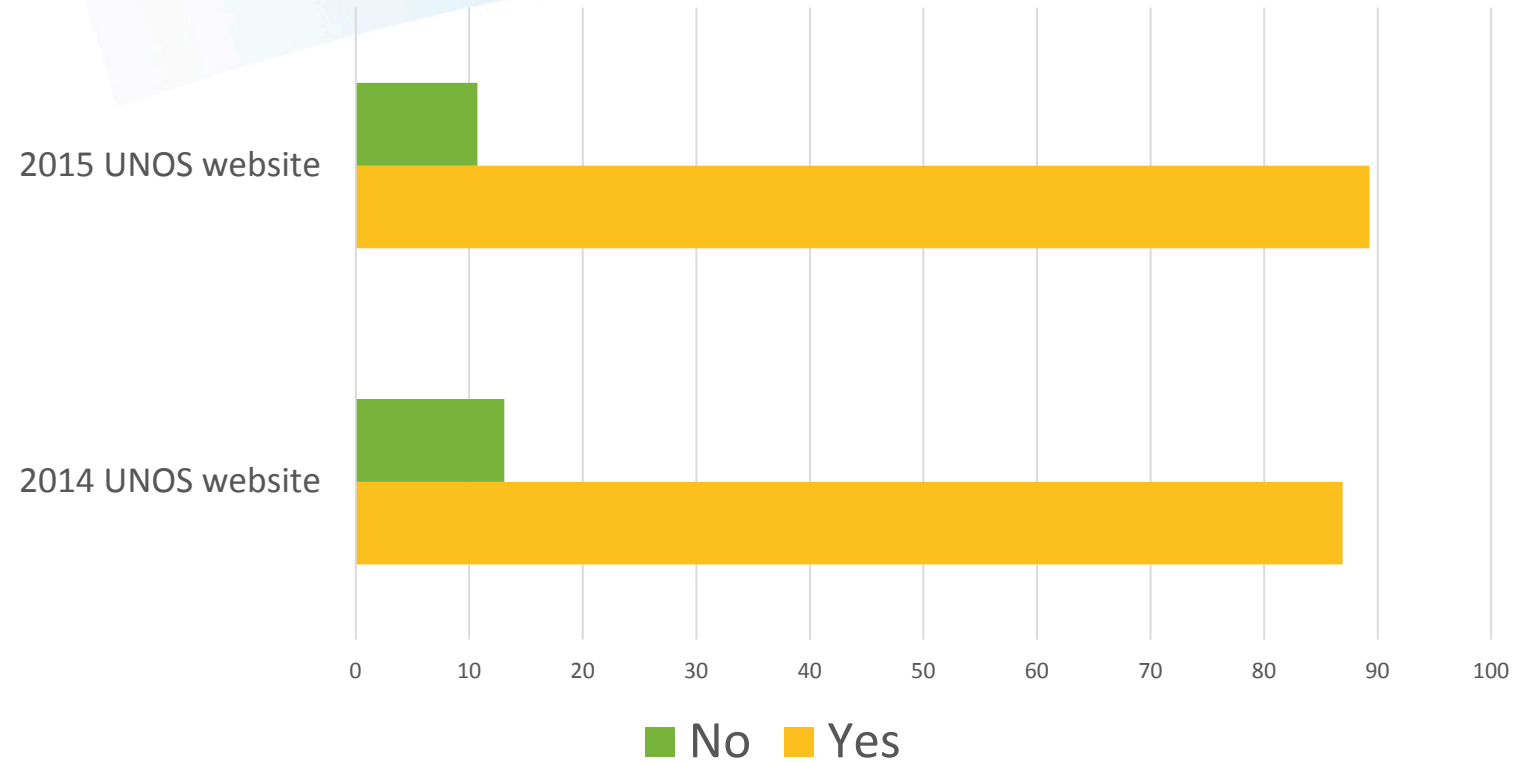
- Reading e-newsletters (Transplant Pro, UNOS Tech News)
  - We have comparison data but we had to aggregate certain categories in 2015 to compare with categories from 2014 survey
- Reading content on websites (Transplant Pro, UNOS, OPTN, etc.)
  - We have comparison data but we had to aggregate certain categories in 2015 to compare with categories from 2014 survey
- Accessing and entering data in UNet
- Attending webinars
- Responding to surveys
- Contacting your regional administrator or UNOS staff
- Nominating someone for a board or committee position



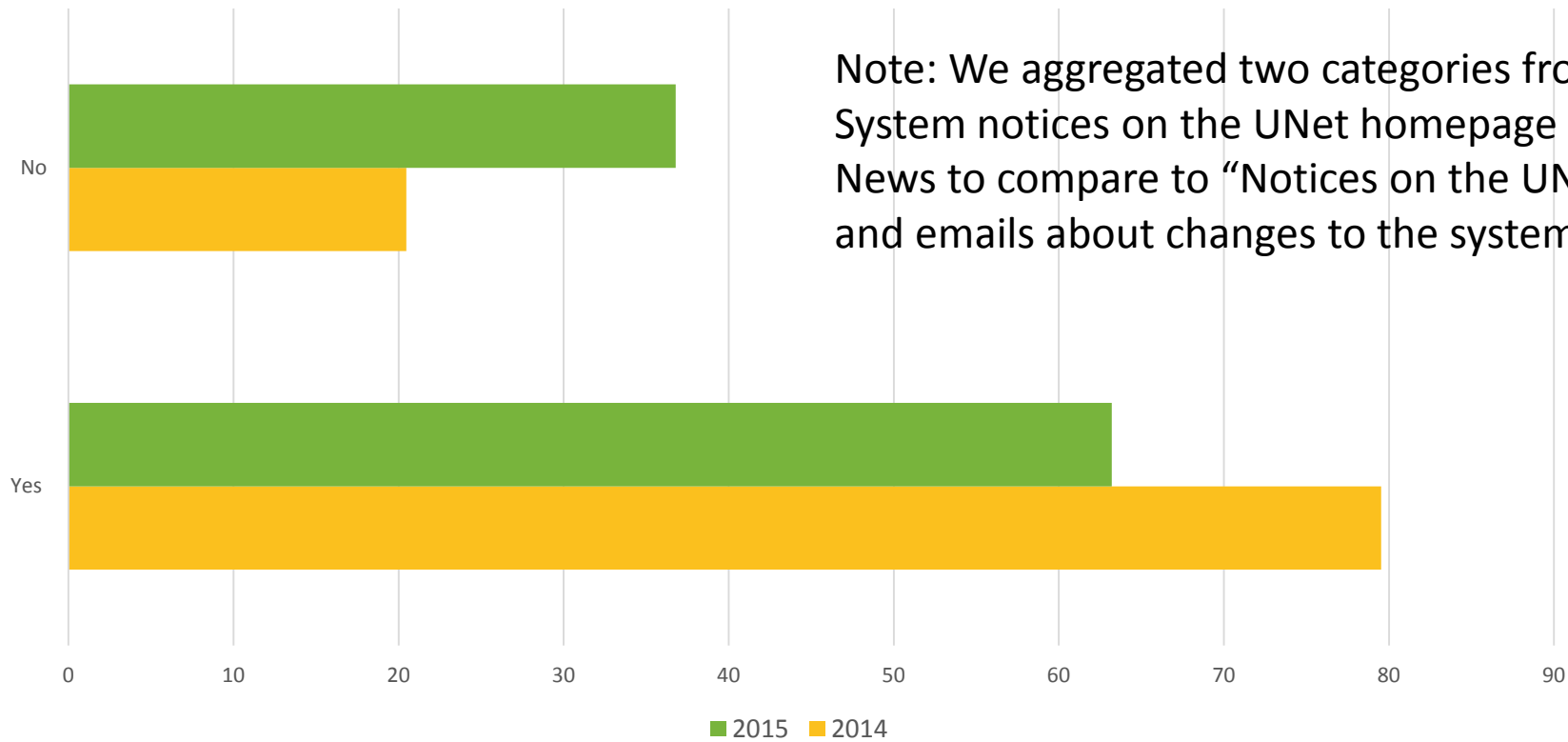
## Do you depend on Transplant Pro?



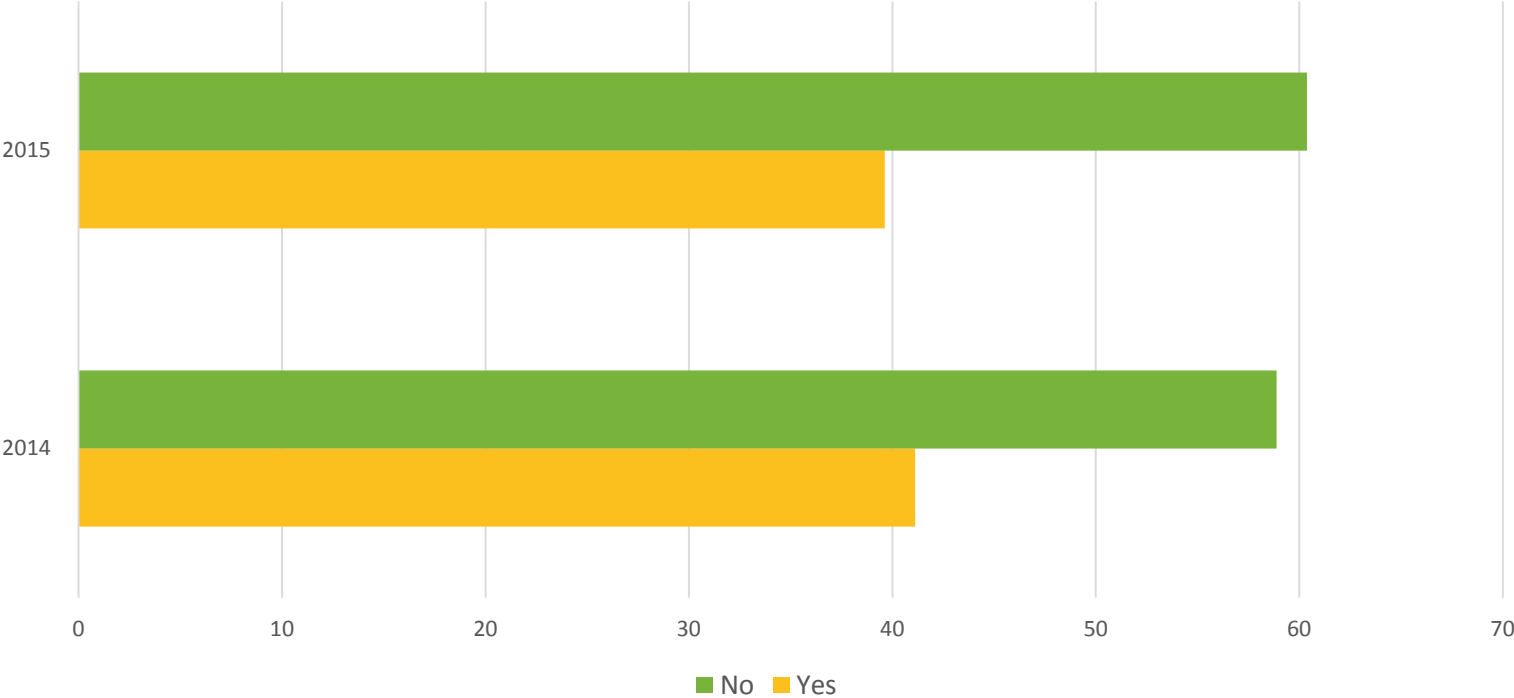
## Do you depend on the UNOS website?



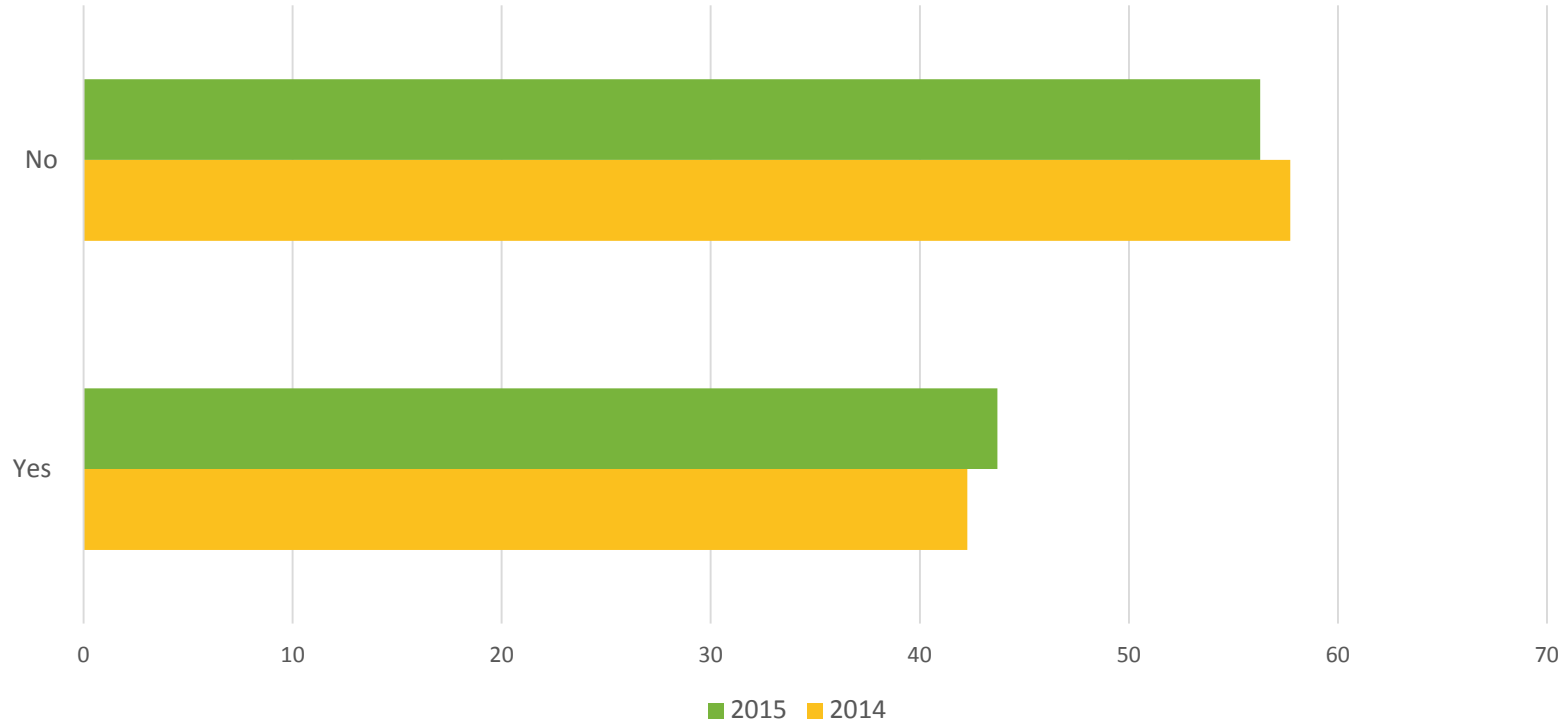
## Do you depend on UNet system notices and emails?



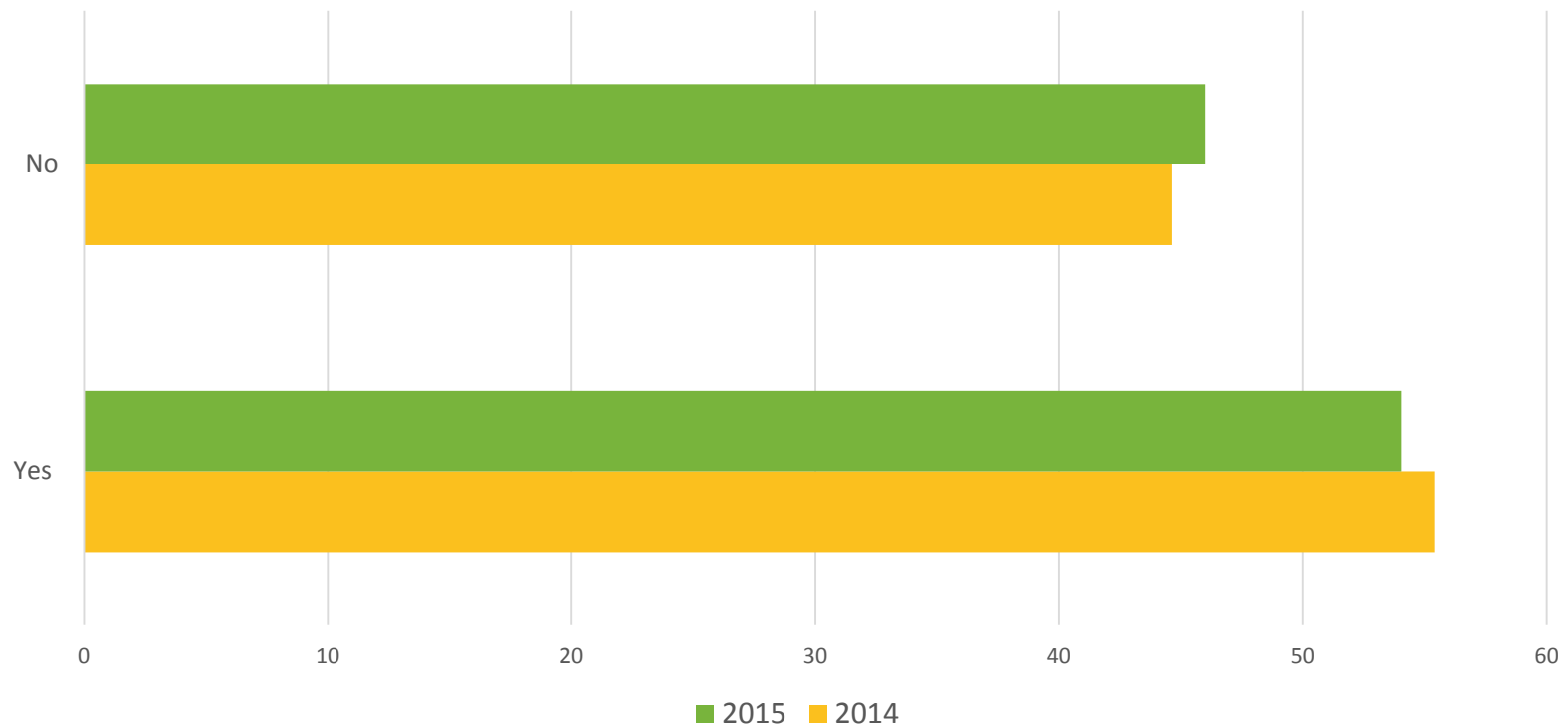
# Do you depend on one-on-one communication with your regional councilor?



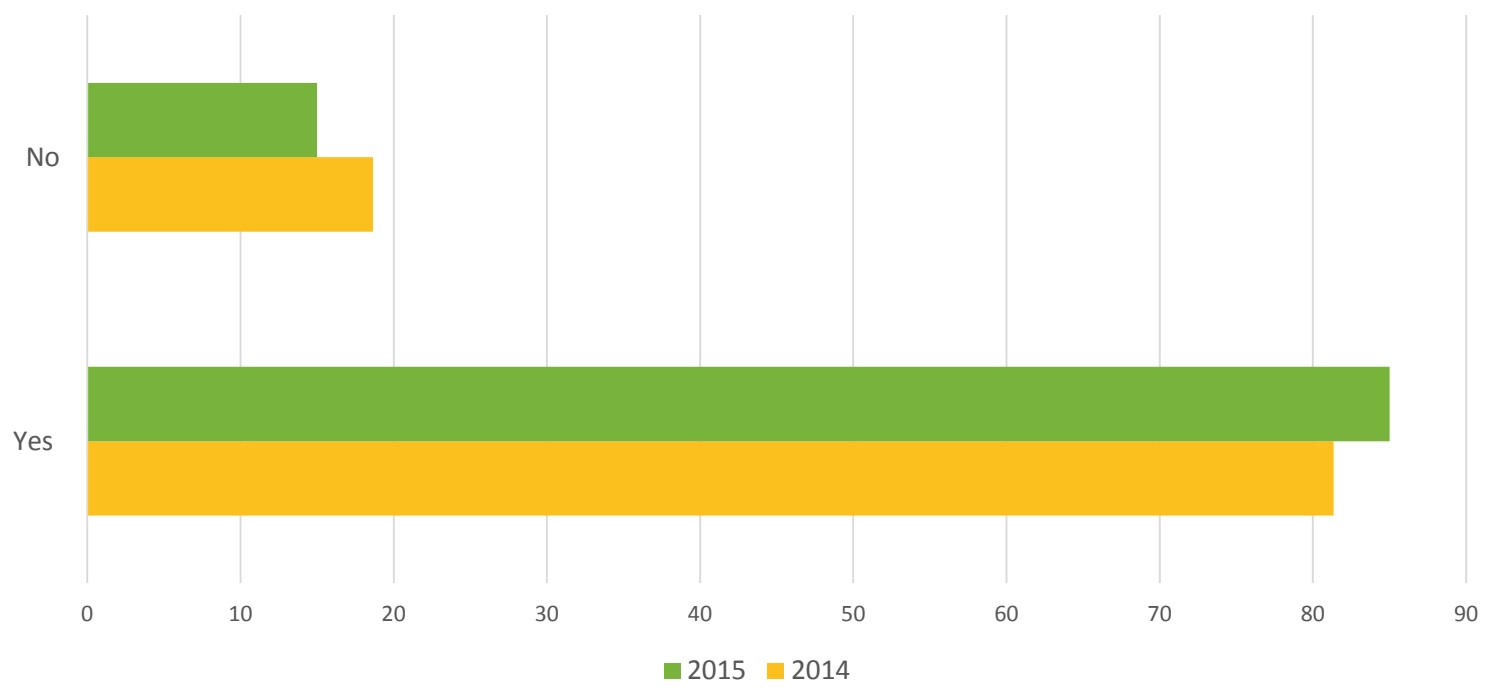
## Do you depend on publications of transplant-related societies (Chimera, Progress in TX, etc.)?



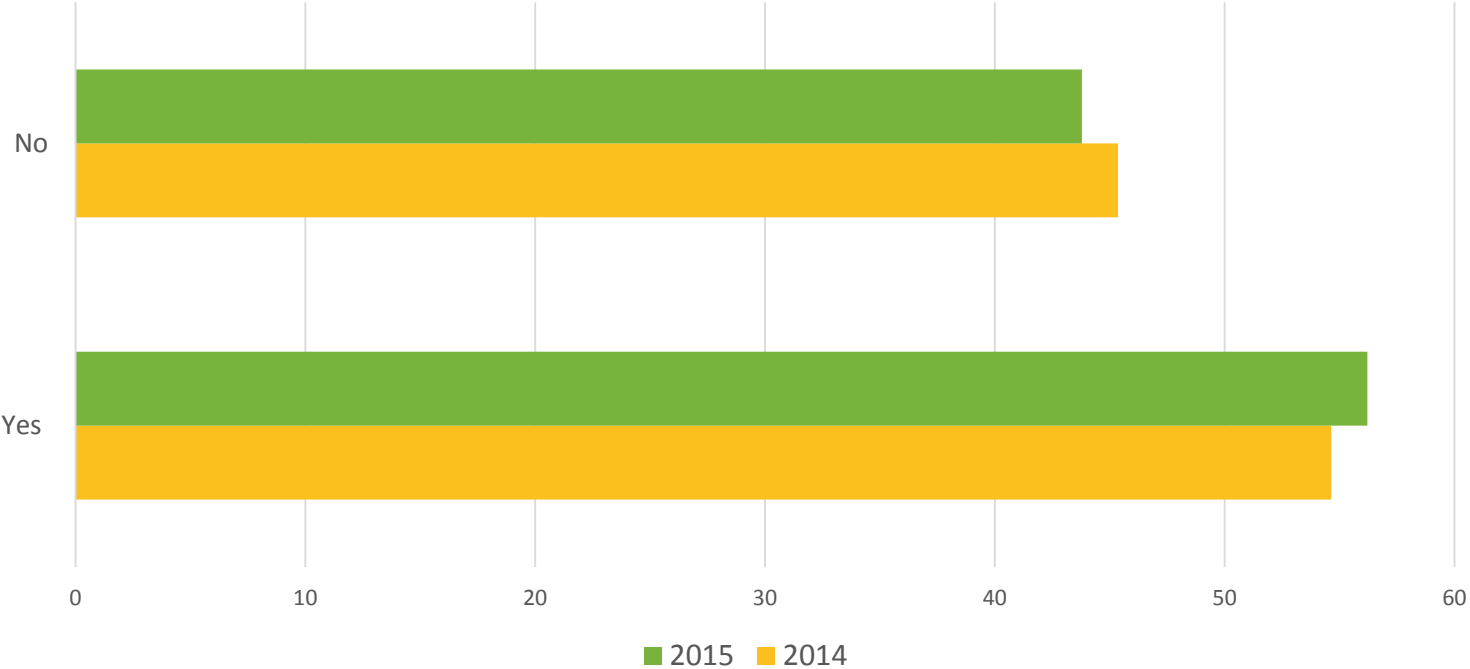
## Do you depend on conferences like TMF, NATCO, etc.?



# Do you depend on one-on-one communication with colleagues?



# Do you depend on one-on-one communication with UNOS staff?





## Is the information you receive from UNOS written clearly?

